

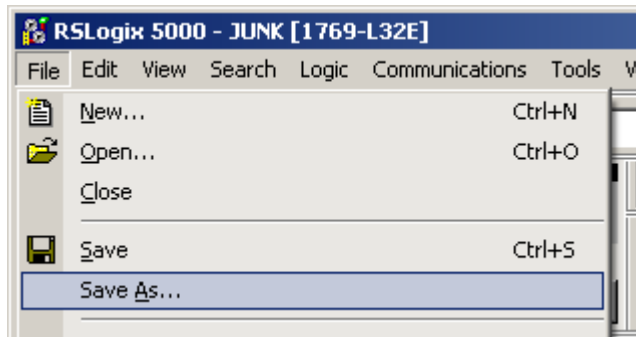
# Siemens no charge code conversion service

Modernization made easy

Exporting from RSLogix5000® – a tool that is used to configure the Rockwell® Logix controllers

## Step 1 – RSLogix5000 “Save As...” menu

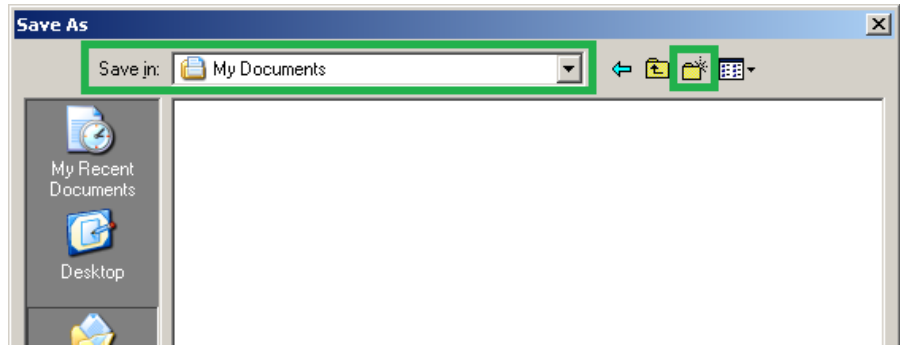
From the RSLogix5000 program with a configuration loaded, choose the “Save As...” menu.



# Exporting from RSLogix5000

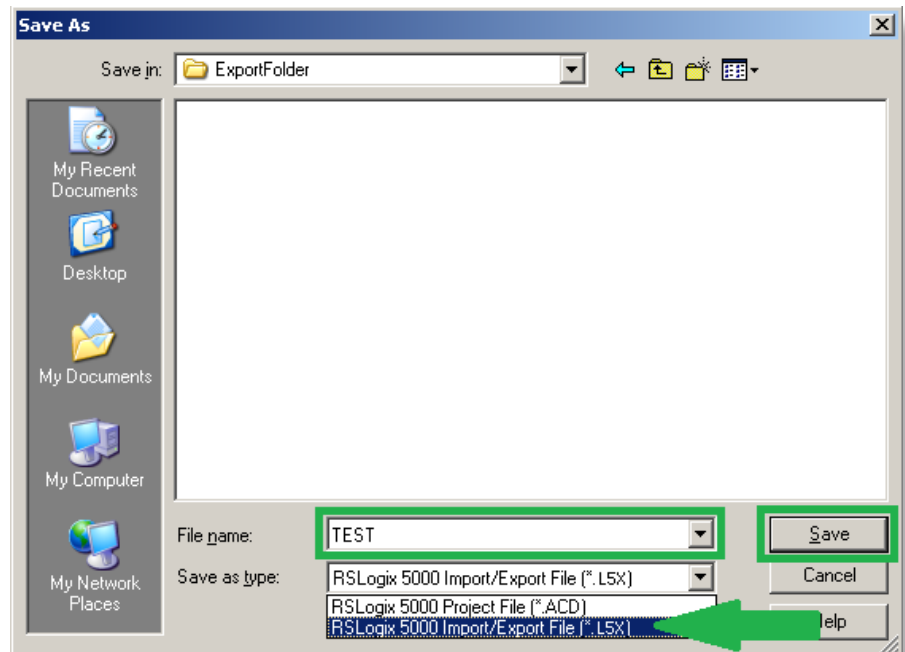
## Step 2 – Create a new Export Folder

Use the “New Folder” button to create a new export folder in the My Documents folder (e.g. “ExportFolder”).

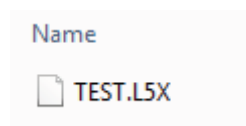


## Step 3 – Choose the L5X type and click Save

Choose the “RSLogix5000 Import/Export File (\*.L5X)” Save As Type and click “Save” button.



This folder now contains files such as \*.L5X file which will be used by the Rockwell import tool.



Published by  
Siemens Industry, Inc. 2017.

Siemens Industry, Inc.  
5300 Triangle Parkway  
Norcross, GA 30092

For more information, please contact  
our Customer Support Center.  
Phone: 1-800-241-4453  
E-mail: info.us@siemens.com

[usa.siemens.com/modernize](http://usa.siemens.com/modernize)

©2017 Siemens Industry, Inc.

The technical data presented in this document is based on an actual case or on as-designed parameters, and therefore should not be relied upon for any specific application and does not constitute a performance guarantee for any projects. Actual results are dependent on variable conditions. Accordingly, Siemens does not make representations, warranties, or assurances as to the accuracy, currency or completeness of the content contained herein. If requested, we will provide specific technical data or specifications with respect to any customer's particular applications. Our company is constantly involved in engineering and development. For that reason, we reserve the right to modify, at any time, the technology and product specifications contained herein.