

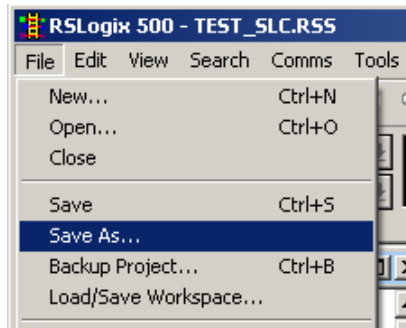
Siemens no charge code conversion service

Modernization made easy

Exporting from RSLogix500® – a tool that is used to configure the Rockwell® SLC controllers

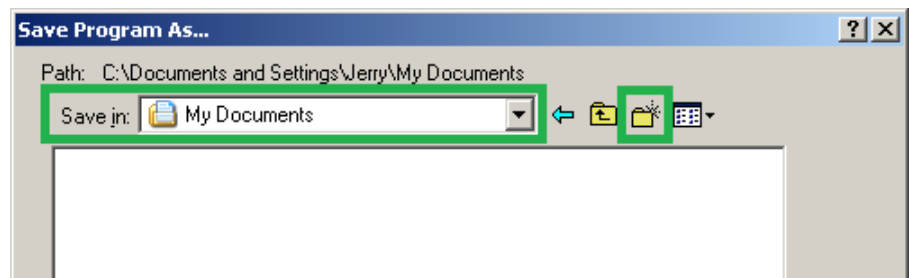
Step 1 – RSLogix500 “Save As...” menu

From the RSLogix500 program with a configuration loaded, choose the “Save As...” menu.



Step 2 – Create a new Export Folder

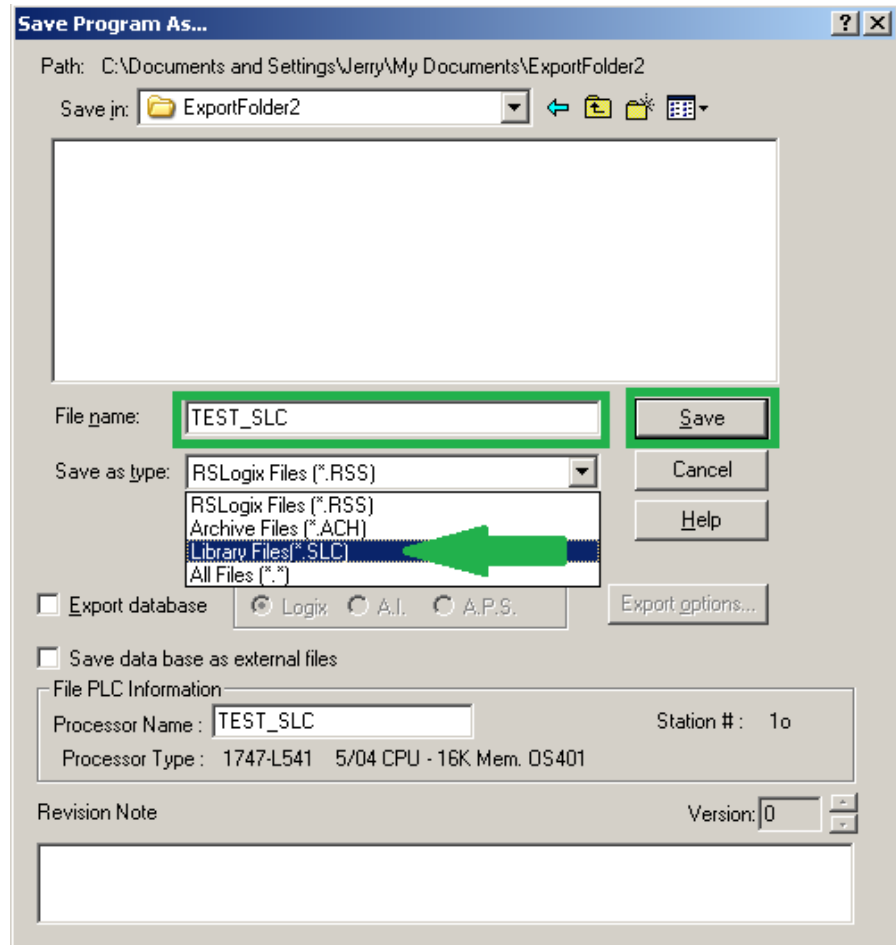
Use the “New Folder” button to create a new export folder in the My Documents folder (e.g. “ExportFolder”).



Exporting from RSLogix500

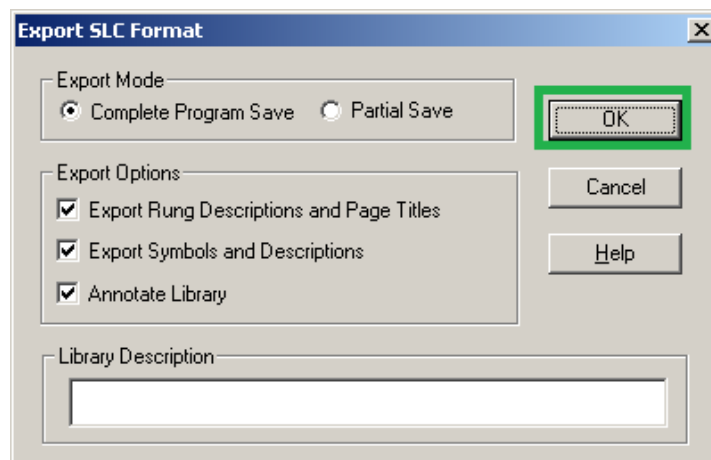
Step 3 – Choose the SLC type and click Save

Choose the “Library Files (*.SLC)” and click “Save” button



Step 4 – Choose the SLC Format Options

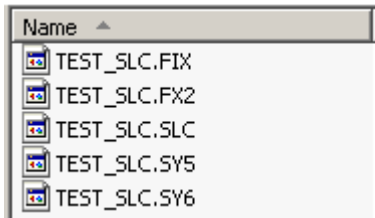
In the resulting “Export SLC Format” dialog box, choose the “Complete Program Save” option, check all other export options, and click “OK” button.



A few dialog boxes will be presented as the data is exported.

Exporting from RSLogix500

This folder now contains files such as *.SLC, *.SY5, and *.SY6 which will be used by the Rockwell Import tool.



**Published by
Siemens Industry, Inc. 2017.**

Siemens Industry, Inc.
5300 Triangle Parkway
Norcross, GA 30092

For more information, please contact
our Customer Support Center.
Phone: 1-800-241-4453
E-mail: info.us@siemens.com

usa.siemens.com/modernize

©2017 Siemens Industry, Inc.

The technical data presented in this document is based on an actual case or on as-designed parameters, and therefore should not be relied upon for any specific application and does not constitute a performance guarantee for any projects. Actual results are dependent on variable conditions. Accordingly, Siemens does not make representations, warranties, or assurances as to the accuracy, currency or completeness of the content contained herein. If requested, we will provide specific technical data or specifications with respect to any customer's particular applications. Our company is constantly involved in engineering and development. For that reason, we reserve the right to modify, at any time, the technology and product specifications contained herein.