

## How to perform simulation reset in SINUMERIK Operate

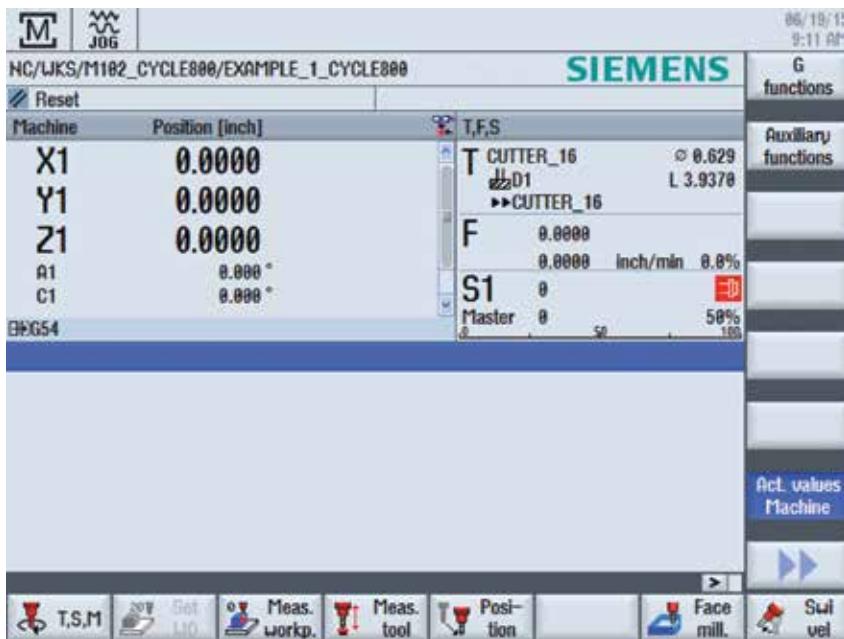


Figure 1

From the main screen, press **Menu Select**.

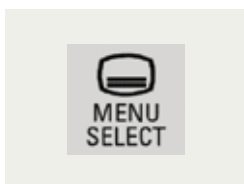
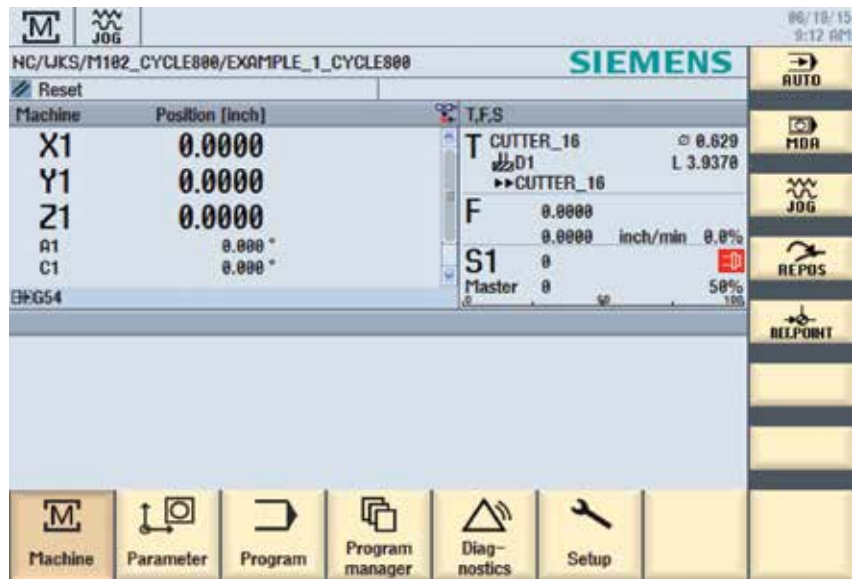


Figure 2



Then press **Setup**.

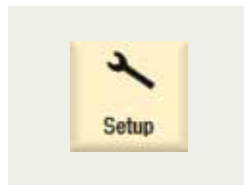
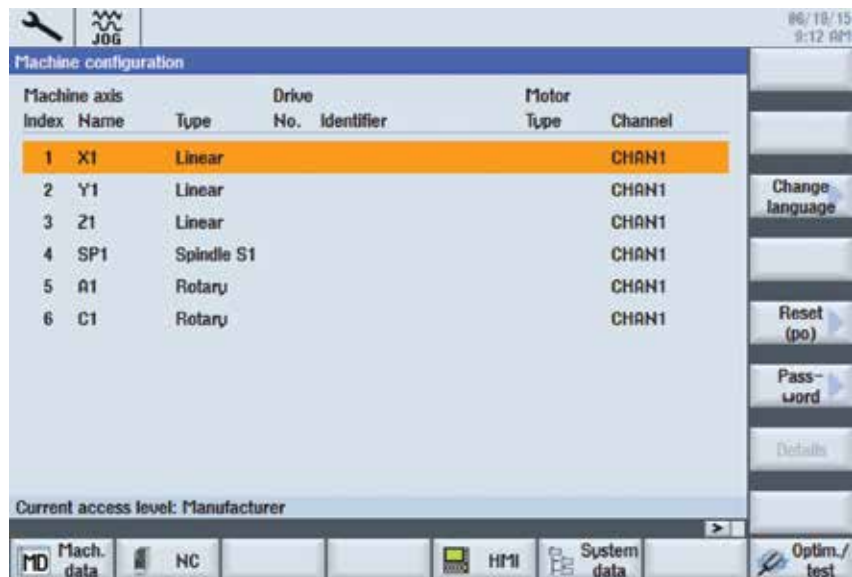


Figure 3



Then press **HMI**.



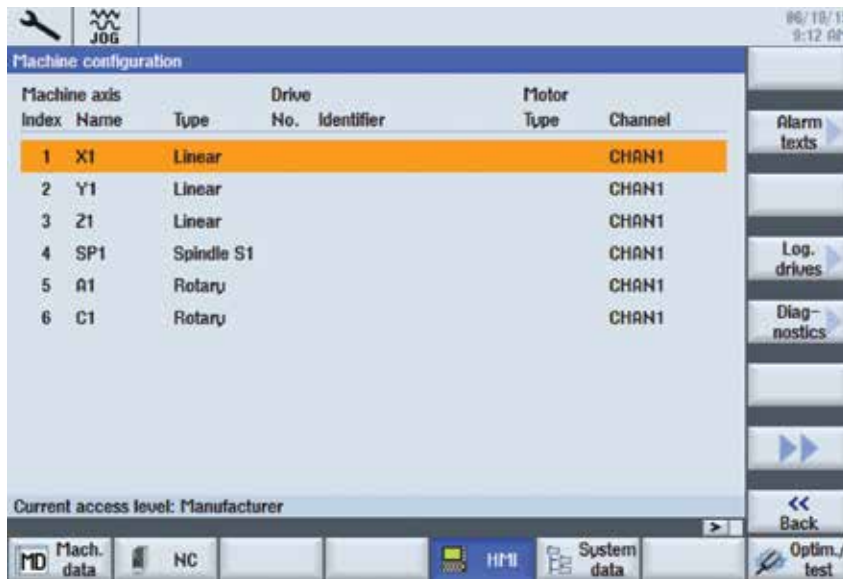


Figure 4

Then press the forward arrows.

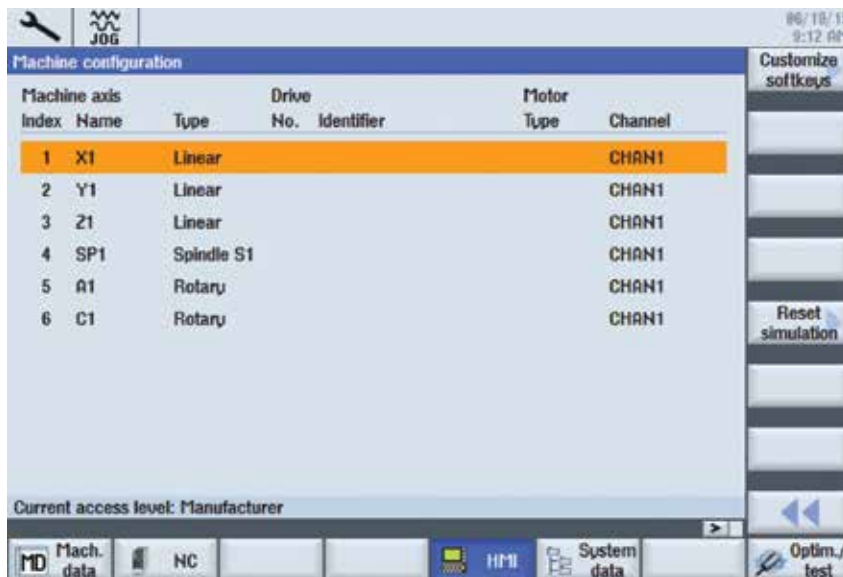


Figure 5

Press **Reset simulation** and then retry simulation.



**Published by  
Siemens Industry, Inc.**

390 Kent Avenue  
Elk Grove Village, IL 60007

1-800-879-8079

Order No. MBTD-PR009-0216

Printed in USA

© 2016 Siemens Industry, Inc.

[usa.siemens.com/cnc](http://usa.siemens.com/cnc)

This brochure contains only general descriptions or performance features, which do not always apply in the manner described in concrete application situations or may change as the products undergo further development. Performance features are valid only if they are formally agreed upon when the contract is closed.

Siemens is a registered trademark of Siemens AG. Product names mentioned may be trademarks or registered trademarks of their respective companies. Specifications are subject to change without notice.