

Creating, loading, unloading and deleting tools

- Press the "OFFSET" key on the keyboard.



The operating area "Parameter" the "Tool list" opens directly.

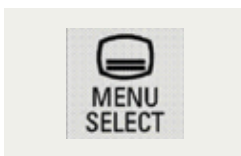


Figure 1

OR

Operating area "Parameter" can be opened from any operating mode ("JOG", "MDA", "AUTO").

- Press the "MENU SELECT" key on the operator panel.



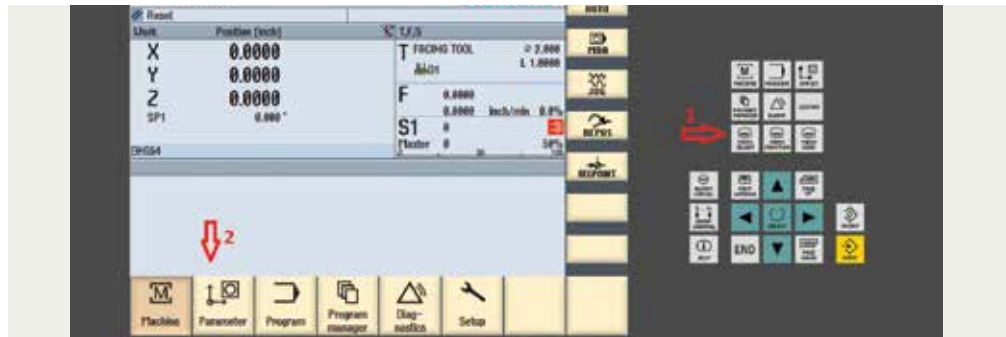
The yellow horizontal and vertical softkey bar opens.

- Then switch to the operating area "Parameter" by pressing the HSK 2 "Parameter" on the operator panel.



The operating area "Parameter" opens, with the "Tool list", "Tool wear", "Magazine", "Work offset", with the "Tool list"

Figure 2

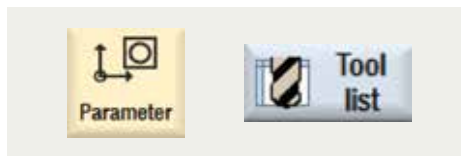


Creating a New Tool

Left: Figure 3
Right: Figure 4



Select "Parameter" operating area, then press the "Tool list" softkey.



In the tool list, all parameters and functions that are required to create and setup the tools are displayed, regardless whether the tools are assigned or not assigned to a magazine location. Each tool is uniquely-identified by the location number, the tool name and the replacement tool number. The most common tools and probes for turning, drilling and milling are offered in the tool list. Geometrical and technological tool data can be assigned to each tool type.

Vertical softkey (VSK)

With the **New tool** VSK, a new tool can be created.



Place the cursor in the tool list at the position where the new tool should be stored.

Select the tool by placing the cursor on the corresponding tool type.

Press the VSK **“OK”** to create the new tool.

You may also place the cursor on an existing tool in the NC tool memory region. Data from the displayed tool will not be overwritten, but the new tool is created below.

Note

This function is only available if the cursor is positioned on a field that does not yet have a tool assigned to it.

Note

For this, you can select an empty magazine location or the NC tool memory outside of the magazine.

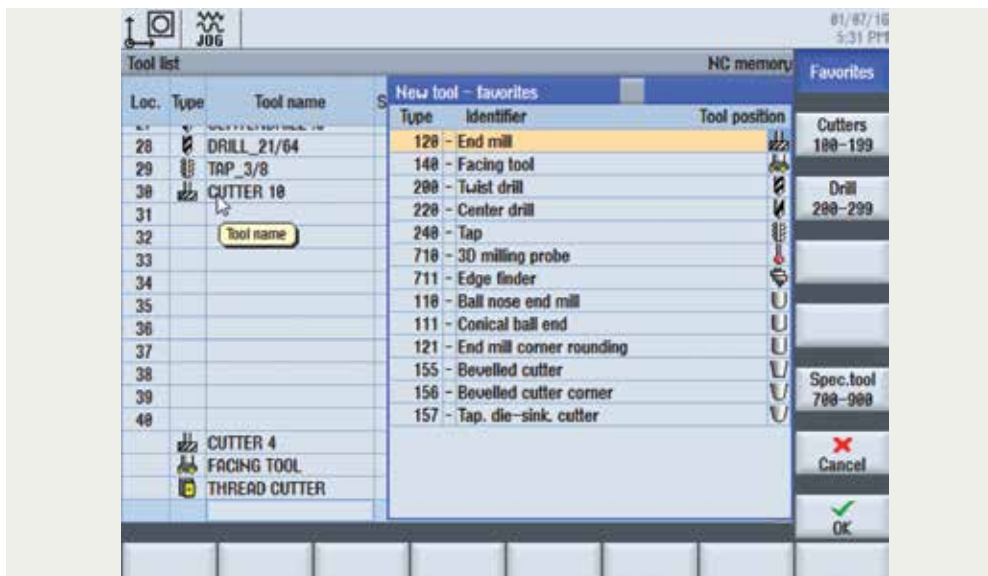


Figure 5

Loading and Unloading Tools

By pressing the VSKs **“Unload”** or **“Load”**, the actual selected tool will be unloaded from or loaded to the magazine. You can load and unload tools to-and-from a magazine via the tool list. When a tool is loaded, it is taken to a magazine location. When it is unloaded, it is removed from the magazine and stored in the NC memory.

When you are loading a tool, the application automatically suggests an empty location. You may also directly specify an empty magazine location.

You can unload tools from the magazine that you are not using currently. The HMI then saves the tool data in the NC memory automatically.

Should you want to use the tool again later, simply load the tool with the tool data into the corresponding magazine location again. The same tool data does not have to be entered more than once.

Figure 6

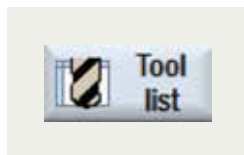


Note

Unloaded tools are displayed on the bottom of the magazine list.

Loading procedure

1. The tool list is opened.



2. Place the cursor on the tool that you want to load into the magazine.

3. Press the "Load" softkey.



The Load to... window opens. The "location" field is initialized with the number of the first empty magazine location.

Figure 7



4. Press the "OK" softkey to load the tool into the suggested location.



OR

Enter the location number you require and press the "OK" softkey.

OR

Press the "Spindle" softkey. The tool is loaded into the specified magazine location or spindle.



Loading an empty magazine location directly with a tool

1. Position the cursor at an empty magazine location where you want to load a tool and press the "Load" softkey.



The "Load with..." window opens.



Figure 8

2. Select the desired tool in the "Tool" field and press the "OK" softkey.



Unloading tools

1. Place the cursor on the tool that you would like to unload from the magazine and press the "Unload" softkey.

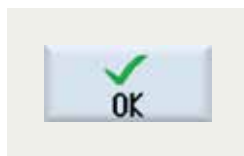


2. Select the required load point in the "Loading Point Selection" window.

Figure 9

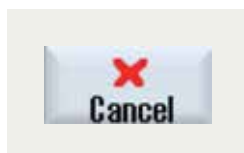


3. Confirm your selection with "OK".



OR

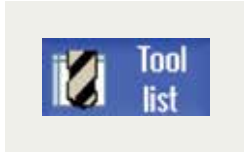
- Undo your selection with "Cancel".



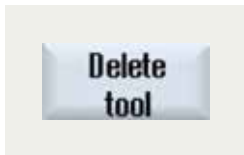
Deleting a tool

To keep the tool list short and clear, unused tools can be deleted from the tool list.

1. The tool list is opened.



2. Place cursor on the tool that you would like to delete.



A safety prompt is displayed.

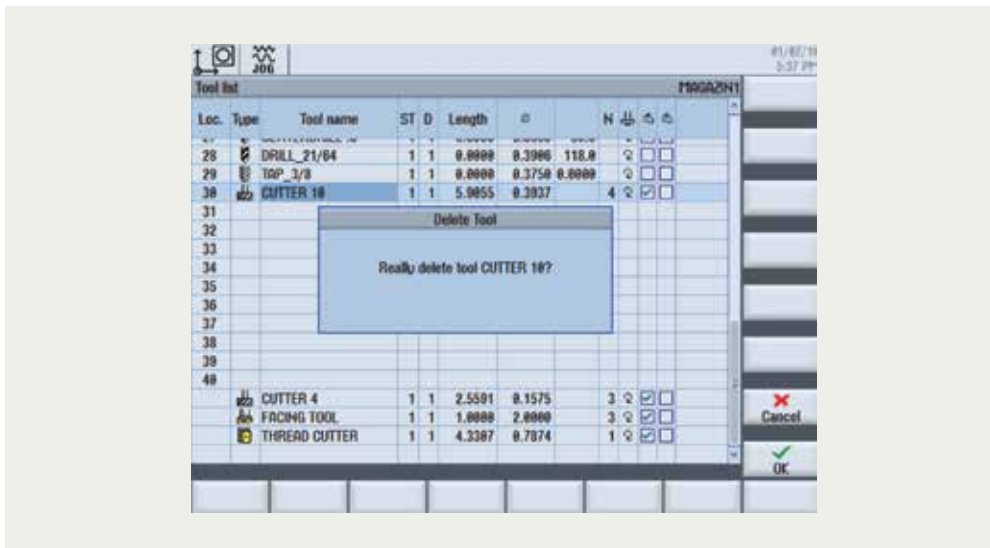


Figure 10

4. Press the "OK" softkey if you really want to delete the tool. If the tool is in a magazine location, it is unloaded and then deleted.



**Published by
Siemens Industry, Inc.**

390 Kent Avenue
Elk Grove Village, IL 60007

1-800-879-8079

Order No. MBTD-PR005-0216

Printed in USA

© 2016 Siemens Industry, Inc.

usa.siemens.com/cnc

This brochure contains only general descriptions or performance features, which do not always apply in the manner described in concrete application situations or may change as the products undergo further development. Performance features are valid only if they are formally agreed upon when the contract is closed.

Siemens is a registered trademark of Siemens AG. Product names mentioned may be trademarks or registered trademarks of their respective companies. Specifications are subject to change without notice.