



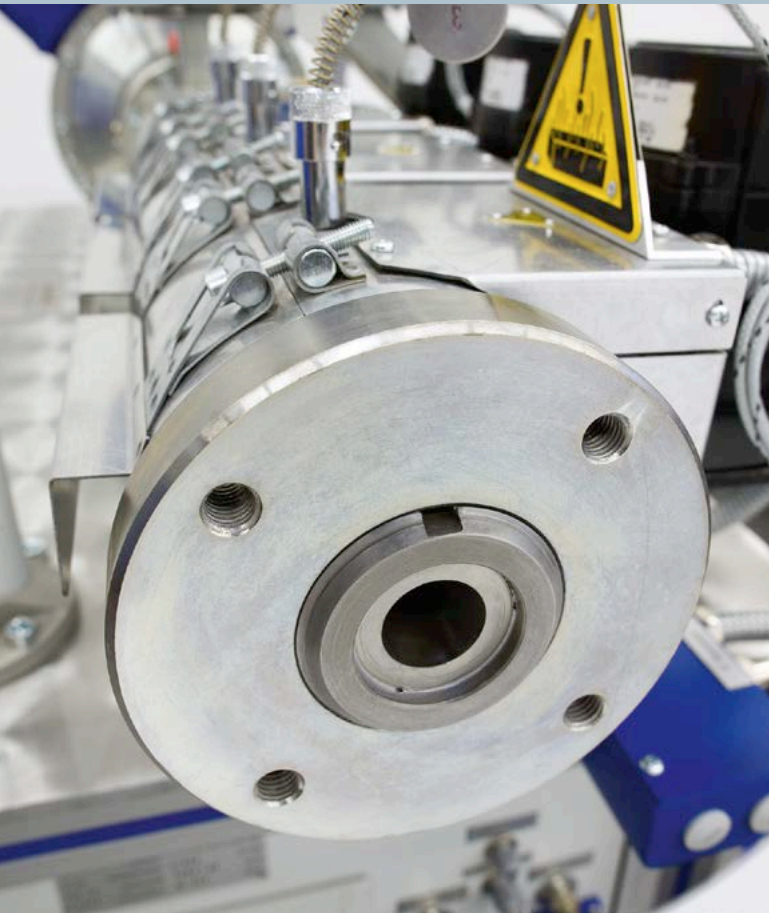
SIEMENS

Extrusion

Drive solutions from one source for extruder screw drives

[siemens.com/plastics](https://www.siemens.com/plastics)

Answers for industry.



Are you looking for a time- and cost-saving complete solution for your extruder screw drive?

Then take advantage of our system-based portfolio: our well-proven geared motors with extruder flange and the modular SINAMICS G120 inverters – for perfect interaction in the sense of Integrated Drive Systems.

The advantages of a complete solution at a glance:

- Perfect interaction of all components
- Reduced engineering costs
- Lower installation costs
- Faster commissioning

Type	FAE.68B	FAE.88B	FAE.108B	FAE.128B	FAE.148B	FAE.168B
Max. power (kW)	9.2	15	30	45	55	90
Min. ratio	3.97	4.77	5.68	3.8	5.39	5.28
Max. ratio	61.17	64.58	64.21	56.42	68.23	53.48
Max. torque (Nm)	1,000	1,900	3,400	6,100	9,000	14,000
Max. axial forces (kN)	65	105	180	260	400	580
Axial bearing (-)	29414E	29417E	29420E	29424E	29426E	29432E
Extruder screw ø (mm)	-	-	-	-	-	-
20	Blue					
25				Blue		
30		Blue				
35	Orange	Blue				
38		Blue				
40		Blue	Blue			
45		Orange	Blue	Blue		
50		Orange	Blue	Blue		
60			Orange	Blue	Blue	
70				Orange	Blue	Blue
75					Blue	Blue
80					Orange	Blue
90						Blue
100						Orange

Extruder screw extraction to the front and back

Extruder screw extraction only to the front

Flexible and powerful geared motors

From the lower up to the medium power range, this product series offers ideal solutions for extruder applications. The gearboxes of the F.AE series are executed as parallel shaft units with extruder flange, and are available in all of the standard ratios.

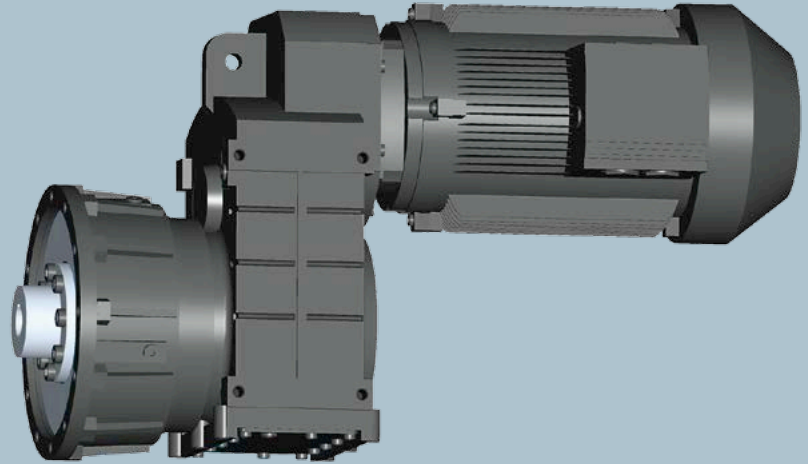
The geared motors are equipped with high-performance self-aligning axial roller thrust bearings and can be adapted to your particular requirements using either the standard flange or an application-specific flange.

Technical data:

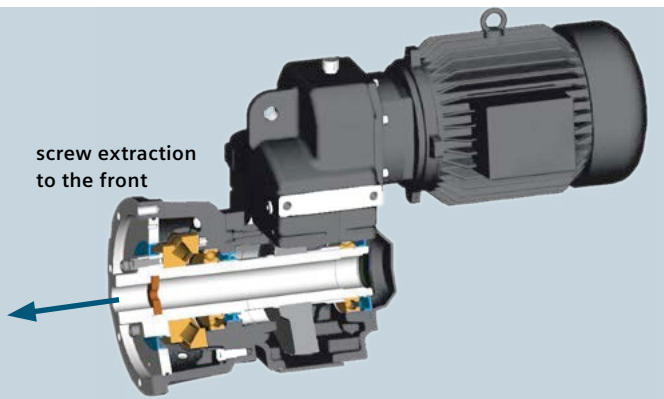
- Torque range from 1,000 Nm to 14,000 Nm
- Power range up to 90 kW
- Output speed up to 550 rpm
- Screw diameters from 20 mm up to 100 mm

Highlights of the geared motors at a glance:

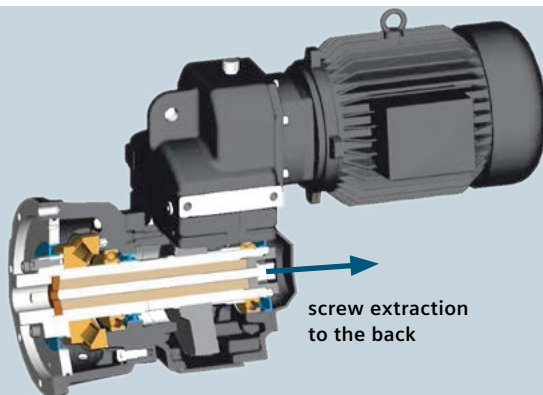
- The housing is protected using axial self-aligning roller thrust bearings with a high load rating in a front-mounted extruder flange
- High operational reliability and low service intervals as a result of the separate oil lubrication of gearbox and extruder flange
- Screw extraction to the front or back
- High degree of compactness
- Standard components are available from stock
- Integrated geared motor eliminates time-consuming alignment of the axes of the drive train when commissioning the system



Flexibility of the screw extraction



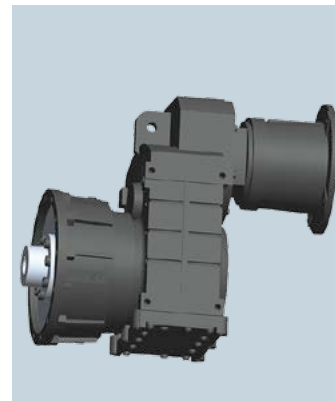
screw extraction
to the front



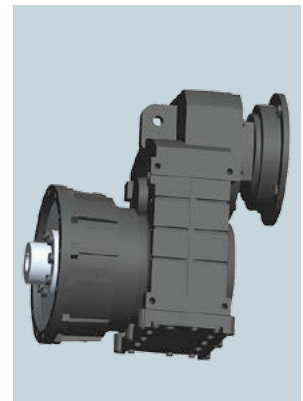
screw extraction
to the back

Additional motor connection options:

In addition to the integrated motor mounting, the motor can be mounted in other ways.



with coupling adapter
IEC motor



with short coupling
adapter IEC motor

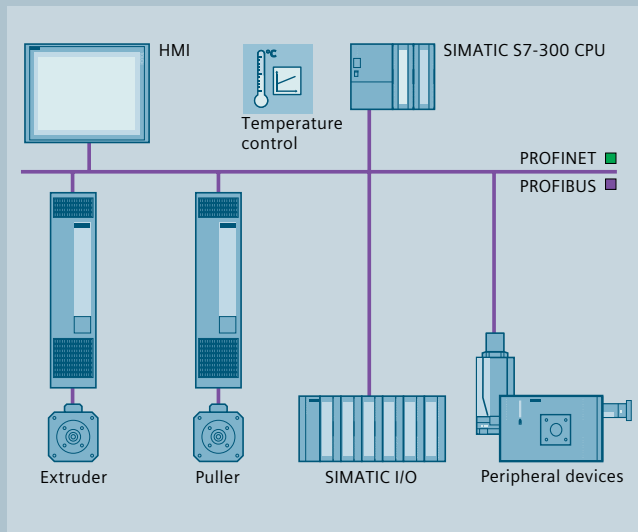
Always the suitable inverter

The SINAMICS G120 inverter is the optimum drive for extruder applications.

Technical data:

- Power range: up to 250 kW
- Degree of protection: IP20
- Integrated STO safety function (Safe Torque Off)
- Communication via PROFINET or PROFIBUS
- Certified for worldwide use according to CE, UL, cUL

We would be pleased to also offer you powerful automation solutions: well-proven SIMATIC hardware components for the control and operation – as well as the EXT3.70 application software including temperature control.



SINAMICS G120,
frame sizes FSA, FSB and FSC;
with Power Module,
Control Unit and
Basic Operator Panel



SINAMICS G120,
frame sizes FSD, FSE and FSF;
with Power Module,
Control Unit and
Basic Operator Panel



Siemens AG
Industry Sector
Motion Control Systems
P.O. Box 31 80
91050 ERLANGEN
GERMANY

Subject to change without prior notice
05/14
Article No.: E20001-A1930-P620-X-7600
Dispo 06372
SCHÖ/51976 V2.MKALLG.WES SB
06141.5
Printed in Germany
© Siemens AG 2014

The information provided in this brochure contains merely general descriptions or characteristics of performance which in case of actual use do not always apply as described or which may change as a result of further development of the products.

An obligation to provide the respective characteristics shall only exist if expressly agreed in the terms of contract. All product designations may be trademarks or product names of Siemens AG or supplier companies whose use by third parties for their own purposes could violate the rights of the owners.

To ensure safe and reliable operation of Siemens products and solutions, it is necessary to take suitable protective measures (e.g. cell protection concept) and to integrate every component into a complete and holistic industrial security concept that reflects current state-of-the-art technology. Products used from other manufacturers must also be taken into consideration.

You can find additional information about industrial security at
<http://www.siemens.com/industrialsecurity>