

# SIEMENS

*Ingenuity for life*

## Drive package partner program

Answers for custom industrial and municipal drives

[usa.siemens.com/drives](http://usa.siemens.com/drives)

### Drive package partner program

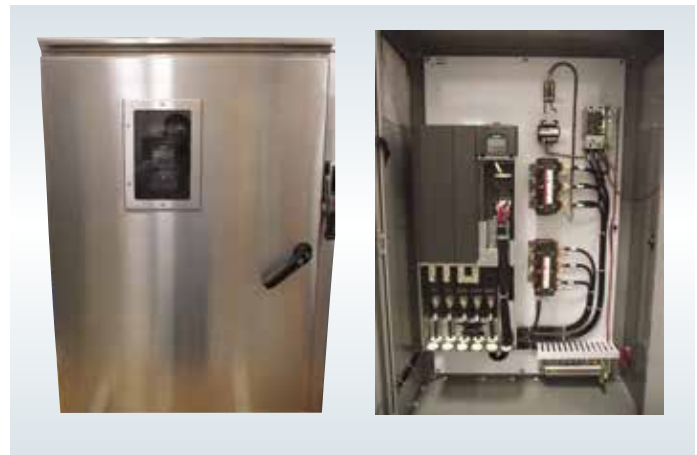
Siemens factories are best-suited for high-volume enclosed drives with light customization. For many applications, customers require greater flexibility with their drive packaging to better suit the environment, the physical space, and / or the hardware options added to the enclosure.

The drive package partner program can provide the customer with this alternative, while still providing solutions that are supported by Siemens.

Partners participating in this program are a select group of Siemens-aligned companies (solution partners, panel builders and electrical equipment OEMs), who can design and manufacture industrial-rated control drive panels that have a solution focus for key markets.

### Benefits at a glance

- Quick quote response and fast panel delivery
- Wider range of enclosure offerings
- Cost-effective solutions for standalone drive
- Program is open to all levels of drive distributors
- Drive package partners are geographically dispersed



## Drive package partner program contact information

Drive package partner	Enclosure offering	Base drive offering	Markets served	Contact information
 <b>SOLVERE</b> INNOVATIVE AUTOMATION AND NETWORKING SOLUTIONS	NEMA 12 NEMA 4X NEMA 3R	MICROMASTER 440 SINAMICS G120/G130	Industrial	<b>Solvere</b> 69 McAdenville Road Belmont, NC 28012 <b>Mark Dickerson</b> (704) 616-9147 mark.dickerson@solve.net www.solve.net
 <b>PREMIER AUTOMATION</b> POWERING INDUSTRIAL AUTOMATION	NEMA 12 NEMA 4X NEMA 3R	MICROMASTER 440 SINAMICS G120/G130 SINAMICS 6RA80 DC DC Enclosed	Industrial	<b>Premier Automation</b> 1100 Rico Road, West Building Monroeville, PA 15146 <b>Walt Dollard</b> (412) 373-3700 wdollard@premierautomation.com www.premierautomation.com
 <b>EDS</b> Engineered Drive Systems Inc. www.engineereddrivesystems.com	NEMA 12 NEMA 4X NEMA 3R	MICROMASTER 440 SINAMICS G120/G130 SINAMICS 18-Pulse	Industrial	<b>Engineered Drive Systems</b> 5901 Corvette Street Los Angeles, CA 90040 <b>Robert Karkafi</b> (213) 718-6959 robert@engineereddrivesystems.com www.engineereddrivesystems.com
 <b>Charter</b> Controls Inc.	NEMA 12 NEMA 4X NEMA 3R	MICROMASTER 440 SINAMICS G120/G130	Industrial	<b>Charter Controls</b> 17050 NE 64th Avenue, Suite B Vancouver, WA 98661 <b>Charlene O'Day</b> (360) 695-2161 char.oday@chartercontrols.us www.chartercontrols.us
 <b>FLANDERS</b> Listen. Innovate. Serve.	NEMA 12	SINAMICS 6RA80 DC	Industrial (minerals)	<b>Flanders</b> 8101 Baumgart Road Evansville, IN 47725 <b>Jed Elkins</b> (812) 867-7421 jedelkins@flandersinc.com www.flandersinc.com
	NEMA 4X	SINAMICS G120 SINAMICS S120	Industrial (food and beverage)	<b>Advanced Industrial Controls</b> 417 W Broadway Steeleville, IL 62288 <b>Jason Tretter</b> (888) 215-2147 jason@advancedindustrialcontrols.com www.advancedindustrialcontrols.com
	NEMA 12	SINAMICS G120/G130	Industrial (oil and gas)	<b>Automation and Electronics</b> 111 Big Horn Road Casper, WY 82602 <b>Gary Rudd</b> (307) 234-9311 gary_rudd@autoelect.com www.autoelect.com
 <b>FIVE STAR ELECTRIC</b> POWERED BY INNOVATION	NEMA 12 NEMA 4X NEMA 3R	ROBICON W-series	Municipal	<b>Five Star Group</b> 11135 Iota Drive San Antonio, TX 78217 <b>Mark Hadja</b> (210) 598-7008 mark@vfd.com www.vfd.com
 <b>FAIRLEAD</b>	MIL-SPEC	SINAMICS G120 SINAMICS S120	Military	<b>Fairlead Integrated Power and Controls</b> 912 Ventures Way Chesapeake, VA 23320 <b>Keith Hubble</b> (757) 277-9178 khubble@millerimg.com fairlead.com/fipc
 <b>North American Electric, Inc.</b>	NEMA 4X NEMA 3R	SINAMICS V20 SINAMICS G120 SINAMICS G130 SIRIUS Softstarters	Industrial (oil and gas) (irrigation)	<b>North American Electric, Inc.</b> 350 Vaiden Drive Hernando, MS 38632 <b>David Hackman</b> (800) 884-0404 davidhackman@naemotors.com www.naemotors.com

Published by  
Siemens Industry, Inc.

5300 Triangle Parkway  
Norcross, GA 30092

(770) 871-3800

usa.siemens.com/motioncontrol

Order No. DRFL-DPPP3-0718

Printed in USA

© 2018 Siemens Industry, Inc.

This document contains only general descriptions or performance features, which do not always apply in the manner described in concrete application situations or may change as the products undergo further development. Performance features are valid only if they are formally agreed upon when the contract is closed. Siemens is a registered trademark of Siemens AG. Product names mentioned may be trademarks or registered trademarks of their respective companies. Specifications are subject to change without notice.