

SIEMENS

Maxum Edition II

PD PA AP
How To Enable and Use the LAN2
Port

Application examples

February 2018

IP-0036

Legal information

Warning notice system

This manual contains notices you have to observe in order to ensure your personal safety, as well as to prevent damage to property. The notices referring to your personal safety are highlighted in the manual by a safety alert symbol, notices referring only to property damage have no safety alert symbol. These notices shown below are graded according to the degree of danger.

DANGER

indicates that death or severe personal injury **will** result if proper precautions are not taken.

WARNING

indicates that death or severe personal injury **may** result if proper precautions are not taken.

CAUTION

indicates that minor personal injury can result if proper precautions are not taken.

NOTICE

indicates that property damage can result if proper precautions are not taken.

If more than one degree of danger is present, the warning notice representing the highest degree of danger will be used. A notice warning of injury to persons with a safety alert symbol may also include a warning relating to property damage.

Qualified Personnel

The product/system described in this documentation may be operated only by **personnel qualified** for the specific task in accordance with the relevant documentation, in particular its warning notices and safety instructions. Qualified personnel are those who, based on their training and experience, are capable of identifying risks and avoiding potential hazards when working with these products/systems.

Proper use of Siemens products

Note the following:

WARNING

Siemens products may only be used for the applications described in the catalog and in the relevant technical documentation. If products and components from other manufacturers are used, these must be recommended or approved by Siemens. Proper transport, storage, installation, assembly, commissioning, operation and maintenance are required to ensure that the products operate safely and without any problems. The permissible ambient conditions must be complied with. The information in the relevant documentation must be observed.

Trademarks

All names identified by ® are registered trademarks of Siemens AG. The remaining trademarks in this publication may be trademarks whose use by third parties for their own purposes could violate the rights of the owner.

Disclaimer of Liability

We have reviewed the contents of this publication to ensure consistency with the hardware and software described. Since variance cannot be precluded entirely, we cannot guarantee full consistency. However, the information in this publication is reviewed regularly and any necessary corrections are included in subsequent editions.

The LAN2 port can perform the same functions as the LAN1 port, except that a Software Upgrade can only be done through LAN1.

Use of the LAN2 port requires software version 5.3 to be running on the analyzer.

Note

This option cannot be used in analyzers that use a hardware SNECON module, or in analyzers that have both SYSCON and CIM boards.

The LAN2 port can only be enabled or disabled using the boot loader from the user interface physically located on front of the analyzer.

Physical Ethernet Connection

Maxum Airbath and Airless Oven (MAA) Models

The LAN port connectors for the MAA model are located inside the SYSCON enclosure on the system interface board (SIB) as shown in the photo below.

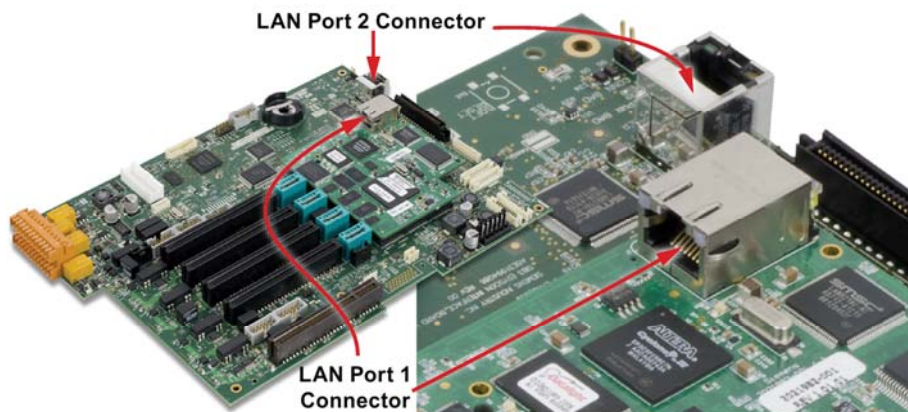


Figure 1 LAN Port Physical Connections

Maxum Modular Oven (MMO) Model

The LAN port connectors for the MMO model are located on the CIM mounted on the inside of the electronics cabinet door as shown in the photo below.

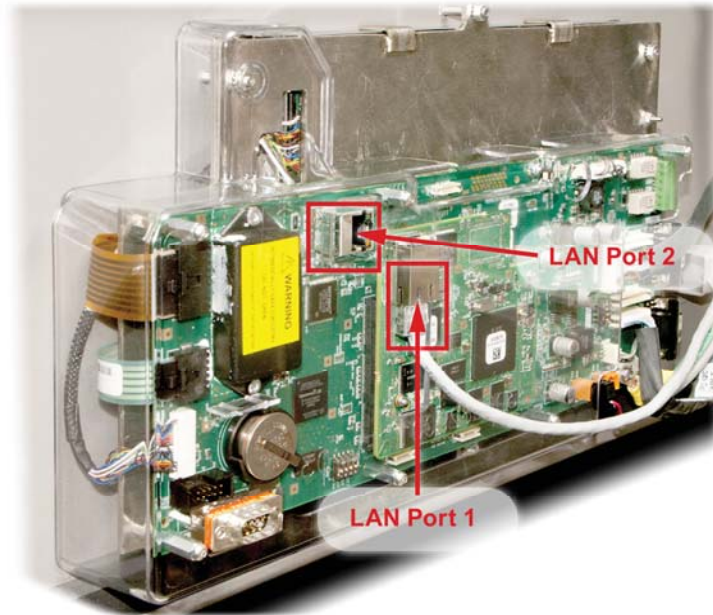


Figure 2 LAN Port Physical Connections (MMO)

Choosing IP Addresses for LAN2

A default gateway address that is reachable on the network (typically a router) must be set. This address cannot be the same as the LAN2 IP address, unlike some other devices. If there is no gateway device on the network, use the IP address of the Modbus Master. If there is no Modbus Master, the IP of another Maxum on the network may be used. Connect the LAN2 port to a **different** network segment (subnet) from the primary LAN1 port.

For example, the LAN1 port could be

- IP = 10.10.0.35
- Netmask = 255.255.254.0
- Gateway = 10.10.0.1

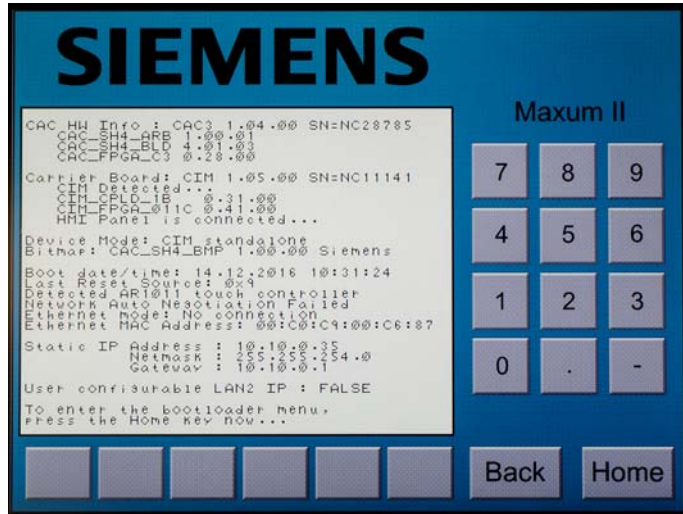
An appropriate LAN2 setting might be

- IP = 192.168.141.10
- Netmask = 255.255.255.0
- Gateway = 192.168.141.1

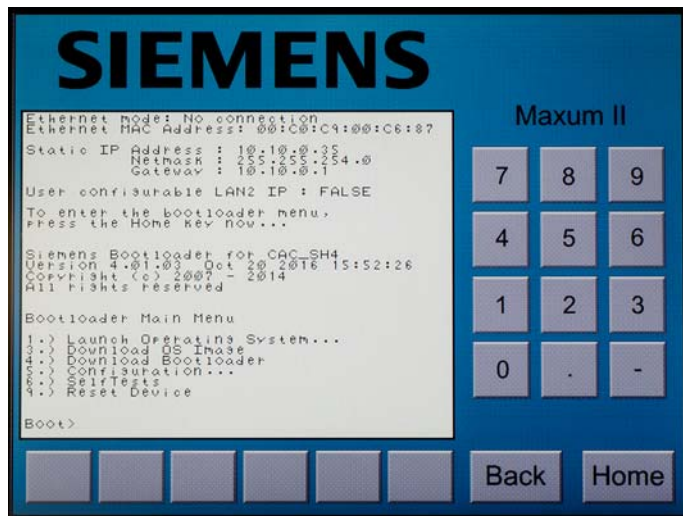
Configuring the LAN2 Port

The boot loader is required to enable or disable LAN2. When using the boot loader, the "HOME" key acts as an 'enter' key, and the "BACK" key acts as a 'backspace' key.

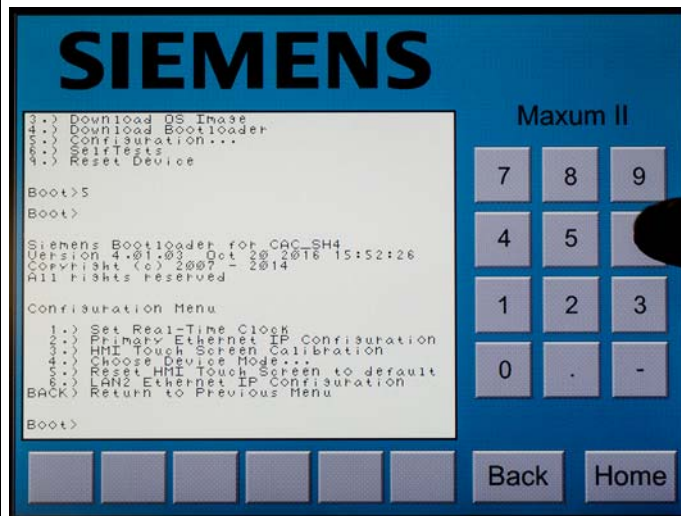
- Enter the boot loader by resetting the analyzer and then pressing the "HOME" key.



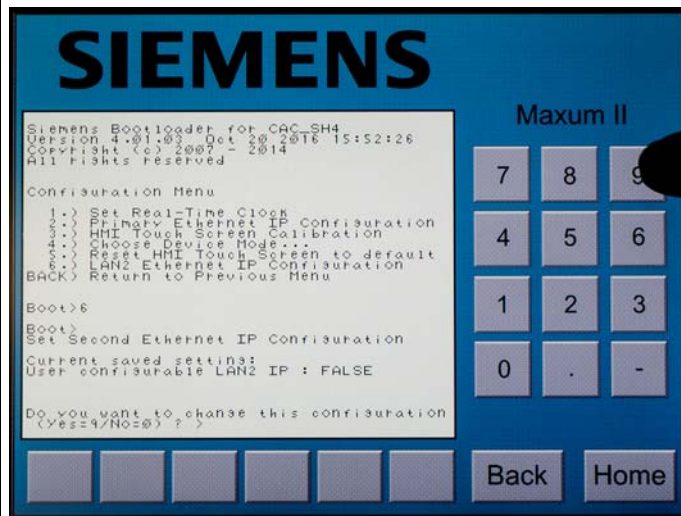
- Select "Configuration" by pressing "5".



- Select "LAN2 Ethernet IP Configuration" by pressing "6".



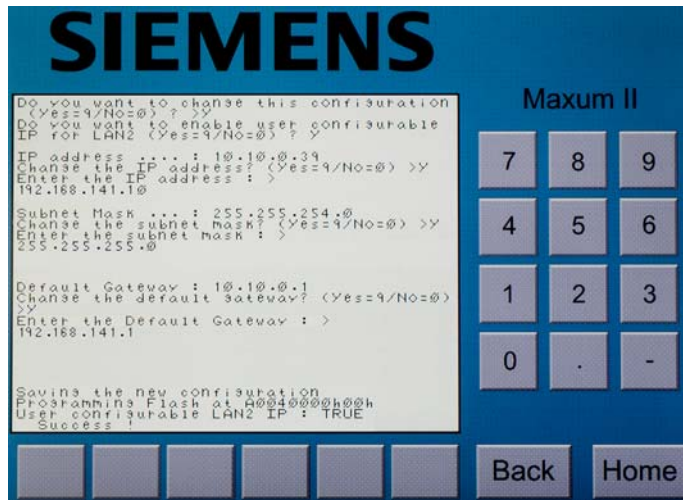
- Press "Yes" to enter the change-configuration screen.



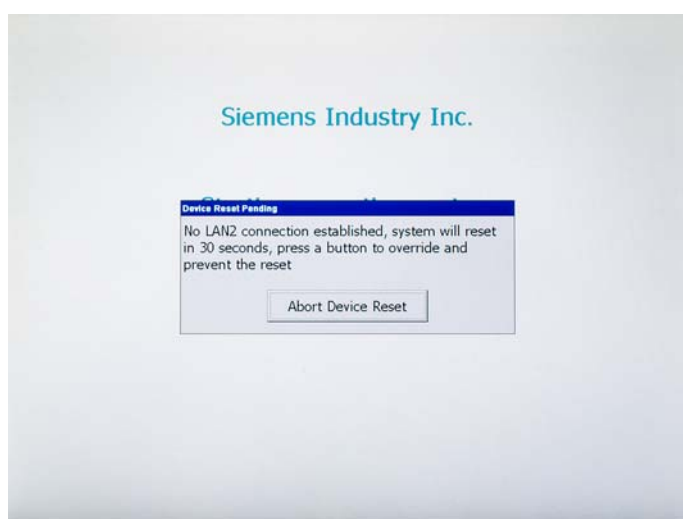
- Enter "Yes" to "Do you want to enable user configurable IP for LAN2?"
- Enter "Yes" to "Change the IP address?"
- Enter the desired IP address
- Press the "HOME" key
- Enter "Yes" to "Change the subnet mask?"
- Enter the desired subnet mask.
- Press the "HOME" key.

Note: Connect the LAN2 port to a **different** network segment (subnet) from the primary LAN1 port.

- Enter "Yes" to "Change the default gateway?"
- Enter the default gateway address.
- Press the "HOME" key
- After the boot loader finishes, press a key to exit and start the software.



If the gateway address entered in the previous step is unreachable, the analyzer will reboot up to 4 times to attempt to connect. During each attempt, the screen displays a "Abort Device Reset" button to start the software without connecting.



Accessing LAN2 Settings in GCP

After enabling the port, the IP settings are available in GCP in Analyzer view by clicking the Network entry.

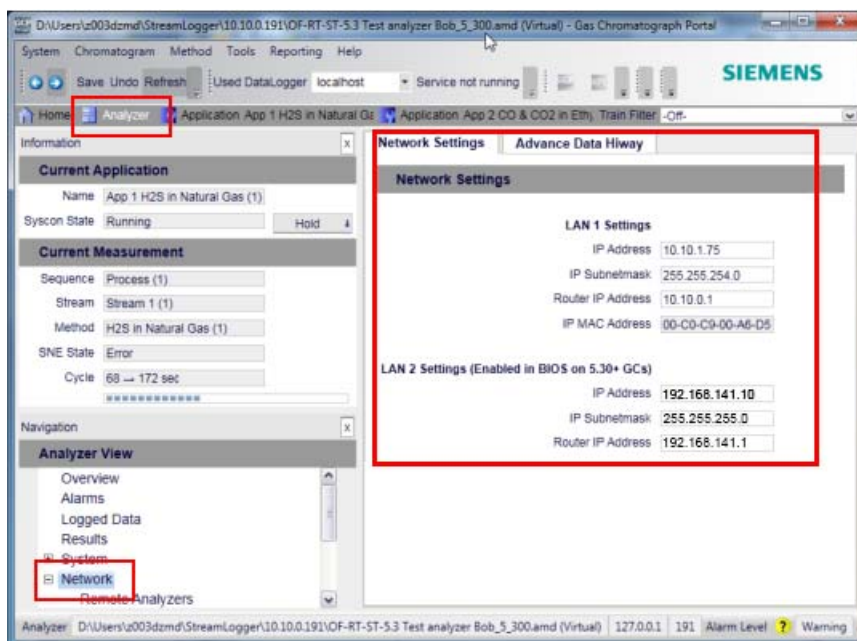
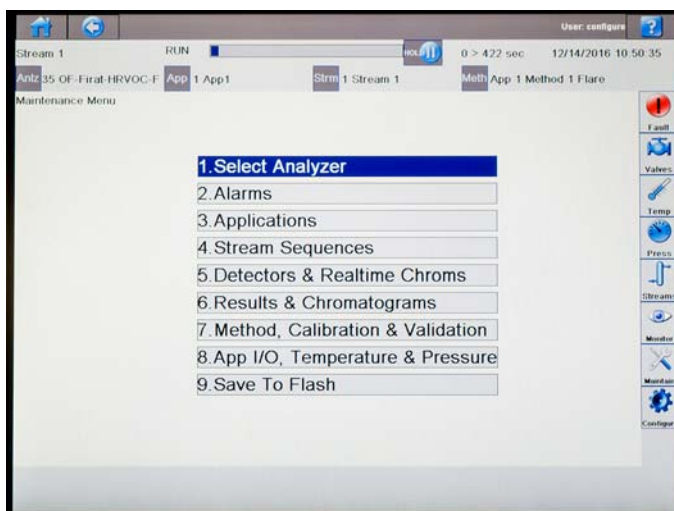


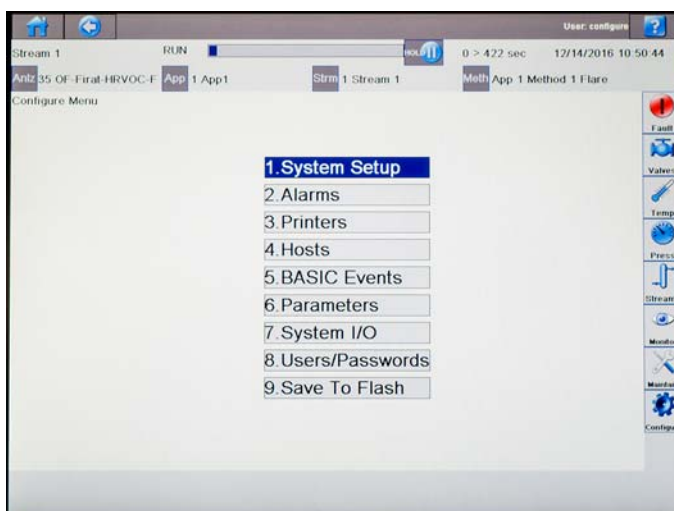
Figure 3 GCP LAN Port Window

Accessing LAN2 Settings in HMI

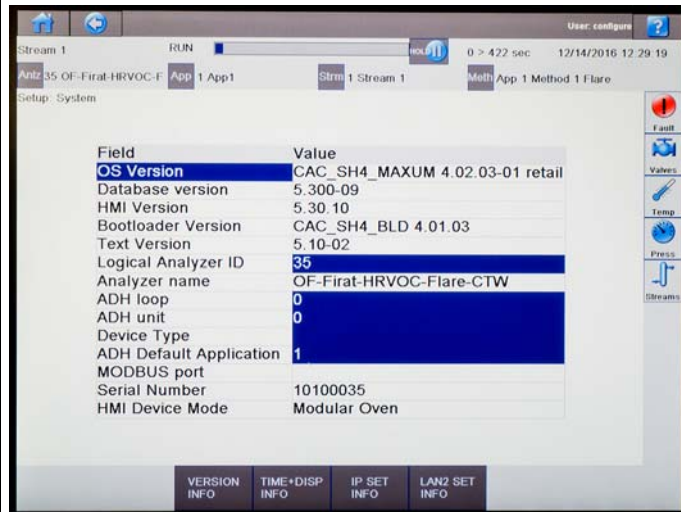
To access the LAN2 settings from the HMI, press "Configure" on the right-hand column of the Home screen.



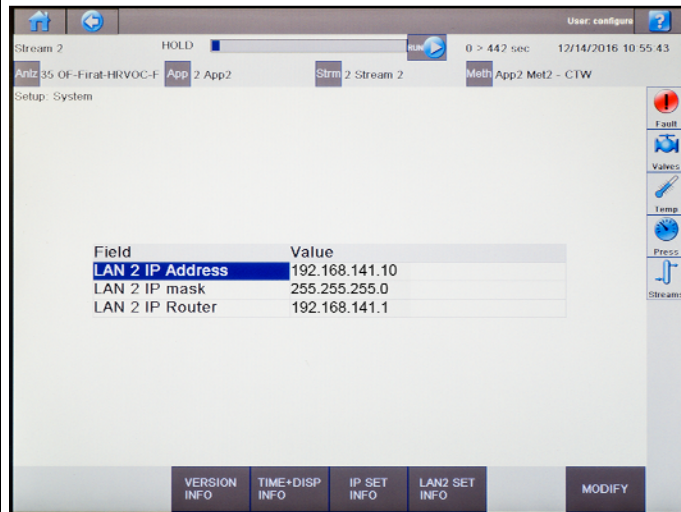
Press "1. System Setup"



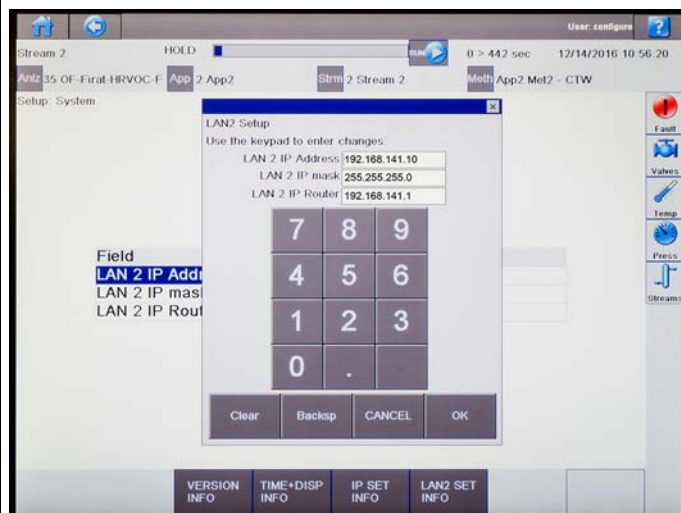
At the bottom of the System Setup screen, press "LAN2 SET INFO".



Press the entry you want to change to select it, then press "MODIFY". A setup screen then appears.



Press the entry to be edited. The existing values can be changed, or the entire entry cleared and re-entered. Press "OK" to accept the new values and exit, or "CANCEL" to exit with no changes.



January 2018 Document Changes

The following items give a general overview of changes from the previous version:

1. Added change-log appendix
2. Added note to use separate network segments for LAN2.
3. Changed document ID from A5E03944542001 to IP-0036.

