

SIEMENS

Ingenuity for life



Analytical Products and Solutions

MAXUM Process Gas Chromatograph: Color Touch Screen Maintenance Panel

Product Bulletin

usa.siemens.com/analyticalproducts

The MAXUM gas chromatograph (GC) is now supplied with a large color touch screen maintenance display that blends the best features of the previous menu-driven design with icons and graphical elements for simple access to all the standard maintenance features of the MAXUM. Thanks to the MAXUM GC's open design structure, it is easy to add this color

maintenance panel to existing MAXUM GCs by simply exchanging the door of the GC's electronics section. This is part of Siemens Analytical Products and Solutions commitment to enhancing the product while protecting our customer's investment in their MAXUM GC system.

Operation at the touch of a screen

Whether you are a new analyzer technician or a GC veteran, the large color touch screen display of the MAXUM is the ideal user interface. All the routine gas chromatograph operation and maintenance functions are accessible with a simple touch of the 10-inch color display. Further simplifying access to the MAXUM GC, the touch screen display is fully certified for direct use in hazardous Div. I and Zone 1 areas.

Accessing analytical parameters, displaying chromatograms and controlling the GC's operation is intuitive and simple. The interface consists of a menu structure to eliminate the need for re-training for existing MAXUM GC users yet also has icons on the screen for direct access to the GC's common operation functions. The new touch screen display also greatly simplifies the ease of reviewing chromatograms as well as supports the use of pop-up data input boxes for data entry.

The display can also be used to interrogate any other MAXUM on the network, if desired. So, rather than walking from one analyzer shelter to another, the technician can easily interact with any MAXUM on the network as if he were standing in front of it.

Existing MAXUM GC users who have the original black and white LCD display, they can easily upgrade to the new color touch screen display by simply swapping out the door of the electronics section*. This is all part of the MAXUM GC design philosophy of backwards comparability that protects our customer's investment in their analytical system while continuously enhancing the MAXUM GC platform.

* Maxum GCs with SYSCON+ or original SYSCON – require GC database software version 4.4
Maxum GCs with SYSCON 2 – require GC database software version 5.1 or later.

Siemens Product Sales Bulletin
May 2018

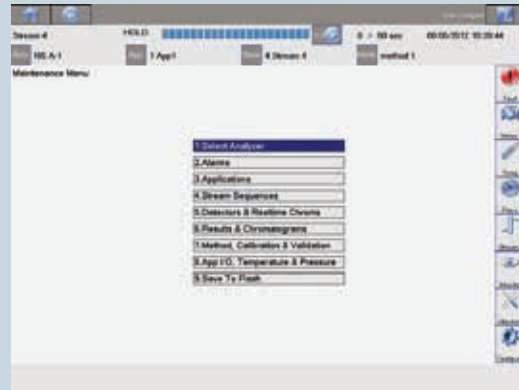
Published by
Siemens Industry, Inc.

Process Automation
Process Industries and Drives
100 Technology Drive,
Alpharetta, GA 30005

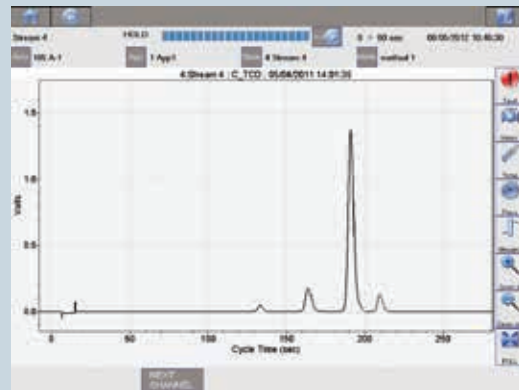
1-800-964-4114
info.us@siemens.com

Subject to change without prior notice
Order No.: PIAFL-00046-0518
Printed in USA
All rights reserved
© 2018 Siemens Industry, Inc.

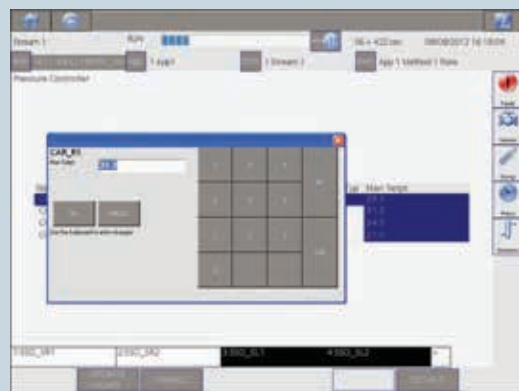
The technical data presented in this document is based on an actual case or on as-designed parameters, and therefore should not be relied upon for any specific application and does not constitute a performance guarantee for any projects. Actual results are dependent on variable conditions. Accordingly, Siemens does not make representations, warranties, or assurances as to the accuracy, currency or completeness of the content contained herein. If requested, we will provide specific technical data or specifications with respect to any customer's particular applications. Our company is constantly involved in engineering and development. For that reason, we reserve the right to modify, at any time, the technology and product specifications contained herein.



The expanded home display of the color user panel blends the familiar menu system of the previous display with intuitive icons that provide direct access to all the routine maintenance functions.



The review of chromatograms takes full advantage of the touch screen capabilities of the color display by simplifying zooming in and out at the touch of your finger.



The display also supports the use of pop-up dialog boxes for entering data and providing additional operational information when needed.

For more information please contact:
Siemens Industry, Inc.
5980 West Sam Houston Parkway North
Suite 500
Houston, TX 77041
Phone: 713-939-7400
ProcessAnalyticsSales.industry@siemens.com