

## Instructions

August, 2012  
Supersedes Issue of  
June, 2002



**E87010-A0145-T003-A3**

Pushbutton & Selector Switch  
NEMA 1 Clamshell Enclosure  
Class 14, 22, 30, 40, 43, 3RT, 3RA, 3RW, CLH, CLM  
Cat. No. 49SB

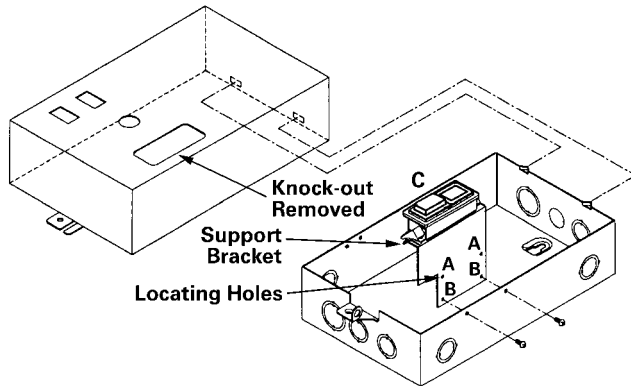


Figure 1

### Description

These pilot devices are for use with Siemens starters and contactors mounted in NEMA Type 1 clamshell enclosures. The start-stop pushbutton provides a momentary 3-wire type of control. The selector switches provide a maintained 2-wire type of control. In the AUTO position of the hand-off-auto selector switch, a remote pilot device such as a pressure switch or a thermostat can be wired to give automatic control for the starter or contactor.

Legend	Pilot Type	Catalog No.	Class
START-STOP	Push Button	49SBPB5	14, 40, 3RT, 3RA, 3RW
OFF-ON	Selector Switch	49SBSB4	14, 40, 3RT, 3RA, 3RW
HAND-OFF-AUTO	Selector Switch	49SBSB1	14, 40, 3RT, 3RA, 3RW
FOR-OFF-REV	Selector Switch	49SBSB2	22, 43, 3RT, 3RA, 3RW
HIGH-OFF-LOW	Selector Switch	49SBSB3	30, 3RT, 3RA, 3RW

**Contents Of Kit:** (1) Pilot device with wires attached, one support bracket, two mounting screws.

### Installation (Figure 1)

1. Remove the enclosure cover from the case.
2. Remove the knockout in the cover.
3. Mount pilot device support bracket assembly with two mounting screws in location **A** (Size 1) or **B** (Size 2 and 3), tighten screws to 25 lb-in.
4. For pushbutton 3-wire control, make electrical connections per Figure 2.
5. For the 2 and 3 position selector switches, make electrical connections as shown in Figures 3, 4, 5, and 6.
6. Location of auxiliary interlocks may differ from diagrams, therefore, markings on units should be followed.

**IMPORTANT**  
THESE INSTRUCTIONS DO NOT PURPORT TO COVER ALL DETAILS OR VARIATIONS IN EQUIPMENT, NOR TO PROVIDE FOR EVERY POSSIBLE CONTINGENCY TO BE MET IN CONNECTION WITH INSTALLATION, OPERATION OR MAINTENANCE. SHOULD FURTHER INFORMATION BE DESIRED OR SHOULD PARTICULAR PROBLEMS ARISE WHICH ARE NOT COVERED SUFFICIENTLY FOR THE PURCHASER'S PURPOSES, THE MATTER SHOULD BE REFERRED TO THE LOCAL SIEMENS SALES OFFICE.  
  
THE CONTENTS OF THIS INSTRUCTION MANUAL SHALL NOT BECOME PART OF OR MODIFY ANY PRIOR OR EXISTING AGREEMENT, COMMITMENT OR RELATIONSHIP. THE SALES CONTRACT CONTAINS THE ENTIRE OBLIGATION OF SIEMENS. THE WARRANTY CONTAINED IN THE CONTRACT BETWEEN THE PARTIES IS THE SOLE WARRANTY OF SIEMENS. ANY STATEMENTS CONTAINED HEREIN DO NOT CREATE NEW WARRANTIES OR MODIFY THE EXISTING WARRANTY.

**⚠ WARNING**

**Hazardous voltage.**  
**Can cause death, serious personal injury, or property damage.**  
Disconnect power before working on this equipment.

### Wire Terminal Product Designation

- <> - NEMA
- () - Sirius 3R IEC
- [] - Sirius Softstart

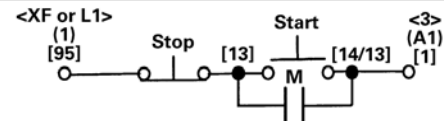


Figure 2

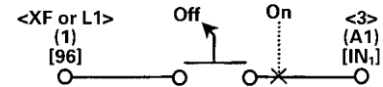


Figure 3

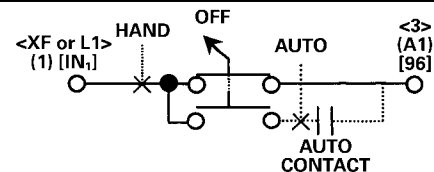


Figure 4

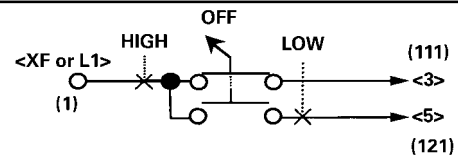


Figure 5

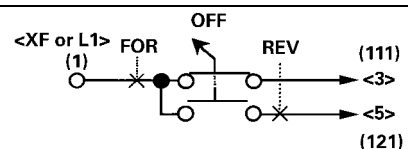


Figure 6