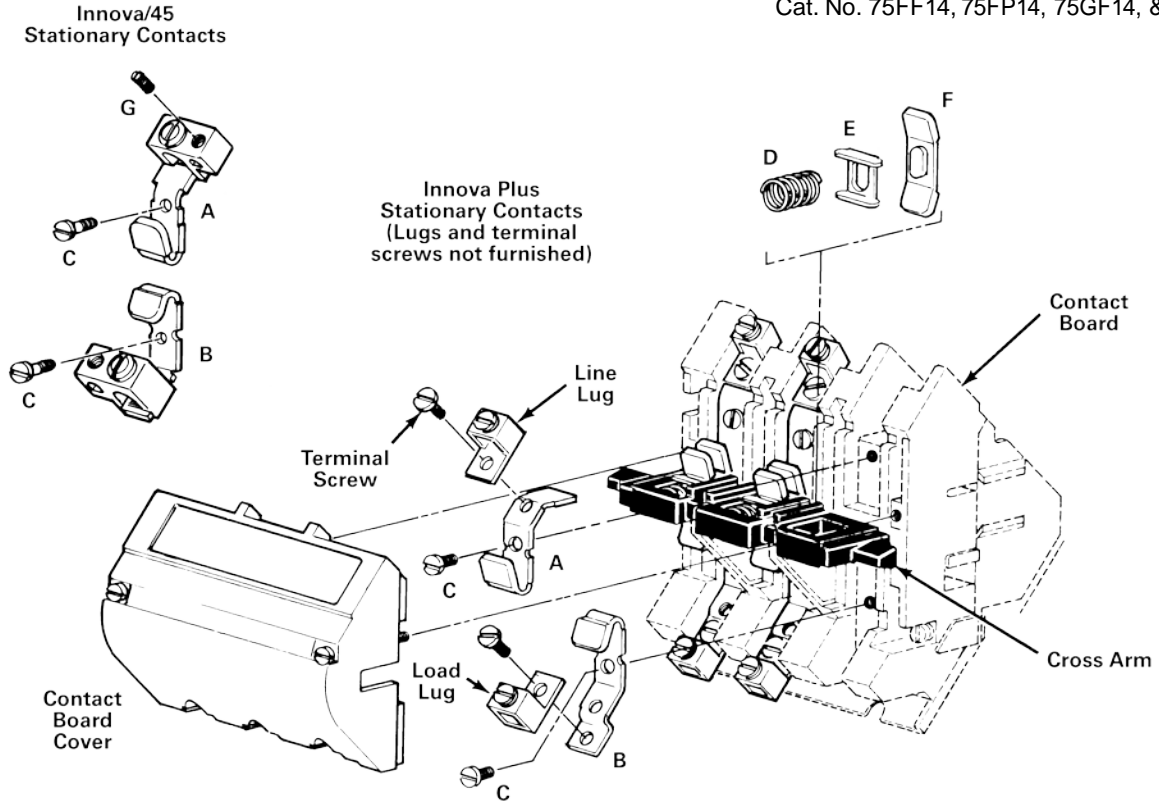


## Instructions

E87010-A0075-T003-A1-75XX

August, 2012  
Supersedes Issue of  
February, 2000

Contact Kit, Innova Controllers  
Sizes 2 & 2<sup>1</sup>/<sub>2</sub>  
Class 14, 22, 30, 40, & 43  
Cat. No. 75FF14, 75FP14, 75GF14, & 75GP14

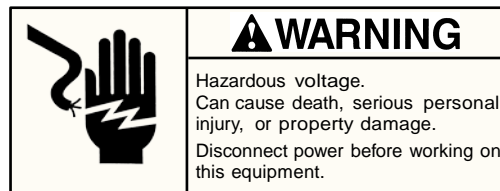


### KIT DATA

Use with sizes 2 and 2<sup>1</sup>/<sub>2</sub> Innova series controllers. Each kit catalog number applies to a specific Innova style and size as follows:

Contact Kit Catalog Number	Innova Style	Controller Size
75FF14	Innova/45	2
75FP14	Innova Plus	2
75GF14	Innova/45	2 <sup>1</sup> / <sub>2</sub>
75GP14	Innova Plus	2 <sup>1</sup> / <sub>2</sub>

In the Innova/45 kits, a lug with a <sup>3</sup>/<sub>8</sub> inch set screw is assembled to each stationary contact. Lugs and terminal screws are not included in the Innova Plus kits.



Rating: The contact assumes the rating of the control on which the contact is mounted.

Contents of kits: Each kit contains the following:

- 1 A line side stationary contact
- 1 B load side stationary contact
- 2 C mounting screws
- 1 D spring
- 1 E spring retainer for kits 75FF14 and 75FP14 only
- 1 F movable contact bar
- 1 G <sup>3</sup>/<sub>16</sub> inch set screw for Innova/45 kits only

### CONTACT REPLACEMENT

When one power pole requires contact replacement, replacing the contacts on all power poles of the controller is recommended to assure proper contact mating.

#### Disassembly

1. Remove the contact board cover from the controller.
2. For a controller equipped with an overload relay, the overload relay must be removed.
  - a. Tag and remove wires from the overload relay load terminals.

(For Engineering Reference Only - Rev. B)

Disassembly - Continued

- b. The overload relay mounting plate is secured to the enclosure or mounting panel with one or two screws; remove screw(s).
  - c. Loosen the three screws at the contactor load terminals. A slot in the overload relay mounting plate engages a tab on the contactor mounting plate. Tilt the overload relay slightly to disengage the slot from the tab and pull the overload relay from the contactor.
3. Tag and remove wires at the contactor line and load terminals for the pole being repaired. For the Innova Plus controllers, do not remove wires from a lug; remove the lug from the terminal.
  4. The movable contact bar includes a raised area in the center for spring seating or for aligning the spring retainer. Remove and discard the worn movable contact bar, spring and spring retainer observing the following:
    - a. For contact without a spring retainer, compress the spring and remove it from the cross arm. Remove the movable contact bar.
    - b. For contact with spring retainer, pry the spring retainer away from the movable contact bar and slide the bar from the cross arm. Compress the spring against the spring retainer (toward the contact board) and tip the spring out of the cross arm. Remove the spring by rotating it, as if turning a screw. Remove the spring retainer from the cross arm.
  5. Remove the worn line side and load side stationary contacts from the contact board. Discard the contacts.

Reassembly

Use all parts furnished in the kit. Factory recommended assembly torques are as follows:

Assembly Item	Minimum Torque (Inch-pounds)
Stationary contact mounting screw <b>C</b>	18
Innova Plus: Power pole line and load terminal screws	18
Innova/45: Power pole load lug set screw	34
Overload relay to enclosure or mounting panel mounting screw(s)	18

1. Secure the load side stationary contact **B** to the contact board with a mounting screw **C**.
2. Secure the line side stationary contact **A** to the contact board with a mounting screw **C**.
3. Install movable contact bar **F** observing the following:
  - a. For contact without a spring retainer, install the movable contact bar **F** in the cross arm. Compress spring **D** and, while holding the movable contact bar toward the stationary contacts, insert the spring in the cross arm.
  - b. For contact with a spring retainer, insert spring retainer **E** in the cross arm with the retainer edges facing away from the contact board as shown in the illustration. Compress spring **D** with tweezers or similar tool. While holding spring retainer **E** toward the contact board side of the cross arm, insert spring **D** in the cross arm. Compress the spring with the spring retainer and slide the properly oriented movable contact bar **F** into the cross arm.
4. Manually operate the controller cross arm and check for proper spring seating and contact mating.
5. To assemble the overload relay to the contactor, reverse the removal procedures.
6. Connect the removed terminal lugs and wires at the contactor line and load terminals.
7. Secure the contact board cover to the controller.