

Instructions

August, 2012
Supersedes Issue of
August, 2003

IMPORTANT
THESE INSTRUCTIONS DO NOT PURPORT TO COVER ALL DETAILS OR VARIATIONS IN EQUIPMENT, NOR TO PROVIDE FOR EVERY POSSIBLE CONTINGENCY TO BE MET IN CONNECTION WITH INSTALLATION, OPERATION OR MAINTENANCE. SHOULD FURTHER INFORMATION BE DESIRED OR SHOULD PARTICULAR PROBLEMS ARISE WHICH ARE NOT COVERED SUFFICIENTLY FOR THE PURCHASER'S PURPOSES, THE MATTER SHOULD BE REFERRED TO THE LOCAL SIEMENS SALES OFFICE.
THE CONTENTS OF THIS INSTRUCTION MANUAL SHALL NOT BECOME PART OF OR MODIFY ANY PRIOR OR EXISTING AGREEMENT, COMMITMENT OR RELATIONSHIP. THE SALES CONTRACT CONTAINS THE ENTIRE OBLIGATION OF SIEMENS. THE WARRANTY CONTAINED IN THE CONTRACT BETWEEN THE PARTIES IS THE SOLE WARRANTY OF SIEMENS. ANY STATEMENTS CONTAINED HEREIN DO NOT CREATE NEW WARRANTIES OR MODIFY THE EXISTING WARRANTY.

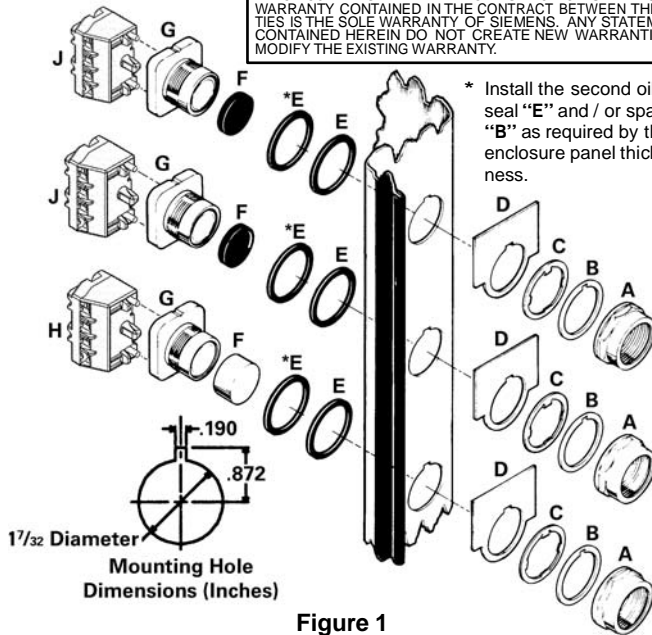


Figure 1

Description

These momentary contact push button kits provide 3-wire control for use with the starters and contactors mounted in enclosures, as noted in the table. The three oil tight push button operators are individually installed on the enclosure. Each operator accommodates mounting up to eight Furnas Class 52 contact blocks (NEMA A600 rating).

The flange of the standard width and extra wide enclosures for Classes 25, 26, and 32 control units contains 2 hole plugs and 1 punch mark for pilot control mounting locations. The push button operators for Classes 25 and 26 horizontal compact and column width enclosures and for the other control unit classes are mounted on the enclosure door.

Contents of kits, cat. nos. 49SAP02 and 49SAP03:

Each push button kit consists of three Class 52 push button operators with applicable legend plates, three push button caps and three contact blocks as follows:


- 3 A lock nuts
- 3 B trim ring spacers
- 3 C index locking rings
- 3 D legend plates
- 6 E oil seals
- 3 F push button caps (2 flush black and 1 raised red assembled to H)
- 3 G operator bases
- 1 H normally closed contact block (catalog number 52BAJ) for the STOP push button
- 2 J normally open contact block (catalog number 52BAK) for the other push buttons.

E98010-A0045-T003-A3-49SA

Push Button
Forward-Reverse-Stop, High-Low-Stop
Class 22, 25, 26, 30, 32, & 43
Cat No 49SAP02 & 49SAP03

Use according to the table:

Kit Description	Catalog Number	For Use With	
		Class and Size	NEMA Type Enclosure
Forward-Reverse-Stop	49SAP02	22, 43	
		2 through 6 All sizes	1 4, 12
High-Low Stop	49SAP03	25, 26	
		All sizes	1, 4, 12



WARNING
Hazardous voltage.
Can cause death, serious personal injury, or property damage.
Disconnect power before working on this equipment.

WARNING
Maintain 1/2 inch minimum clearance through air between uninsulated live parts, such as contact block terminals, and enclosure.

Installation

From 1 to 8 Furnas class 52 contact blocks can be used with each operator; arrange blocks not to exceed four levels. Check enclosure depth for adequate space and the 1/2 inch air clearance noted in the warnings. Figure 2 shows dimensions (in inches) of the operator base with contact blocks. The contact blocks may be attached to the operator base before or after installing the push button operator. Mounting the contact blocks first avoids the problems of limited access in an enclosure.

The flange mounted operators for Classes 25, 26, and 32 control units generally accommodate a maximum of two contact blocks each if a transformer is installed in the lower right portion of the enclosure. These contact blocks should be attached to the left side of the operator base as indicated in Figure 1, before mounting the push button operator.

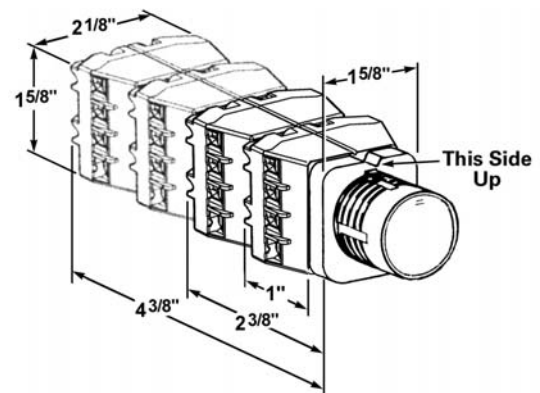


Figure 2

For Engineering Use Only - Rev. E

Mounting Holes

1. Determine the mounting locations for the push button operators.
 - a. For flange mounted pilot controls, select three of the pilot control mounting locations (hole plugs or punch marks).
 - b. For door mounted pilot controls, refer to appropriate drawings or the enclosure for suitable locations.
 - c. Mounting hole dimensions are shown in Figure 1. The operators require mounting on 2¹/₄ inch minimum centers.
2. Make three mounting holes in the enclosure.
 - a. For the Class 25, 26, or 32 control unit in a standard NEMA type 1 enclosure, remove the knock-outs at the selected locations.
 - b. To cut a 1⁷/₃₂ inch diameter hole, use a punch, such as Greelee Knock-out Punch number 730-S. Then use a key way punch, such as Greenlee number 730-K or 720, to cut the keyway. The keyway should be at the top of the hole for proper alignment of the legend plate.

Mounting Push Button Operator

Using wrench catalog number 52MAWA or 52MAWB facilitates assembly and prevents scoring of the lock nuts **A**; however, neither tool is required for installation.

Mount each push button operator as follows:

1. Remove lock nut **A**, from each operator base **H**.
2. Mount each operator base **H** in enclosure as shown in Figure 1, and tighten to 15 ft.lbs.

Wiring Push Buttons

Connect push button contact blocks per applicable wiring diagram. An example is shown.

Forward-Reverse-Stop Example

Connect the wires to the starters as follows:

- Red Wire** - Connect to L1. For starters supplied with transformers, connect to terminal on secondary fuse block, remove jumper A, and connect X2 to other terminal on secondary fuse block.
- Black Wire** - Connect to top terminals (2 & 4) of auxiliary interlocks on starters.
- Yellow Wire** - Connect to top terminal (3) of auxiliary interlock on forward starter.
- Orange Wire** - Connect to top terminal (5) of auxiliary interlock on reverse starter.

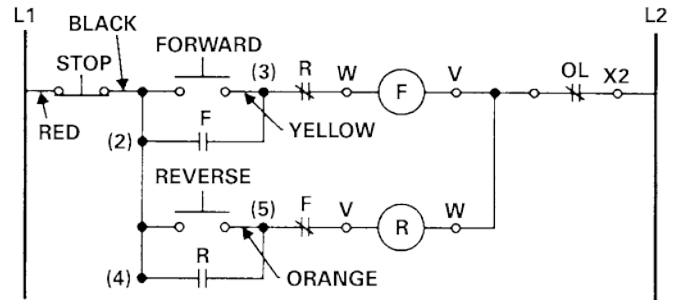


Figure 3

