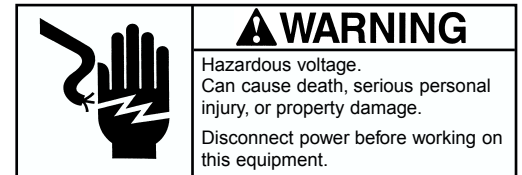
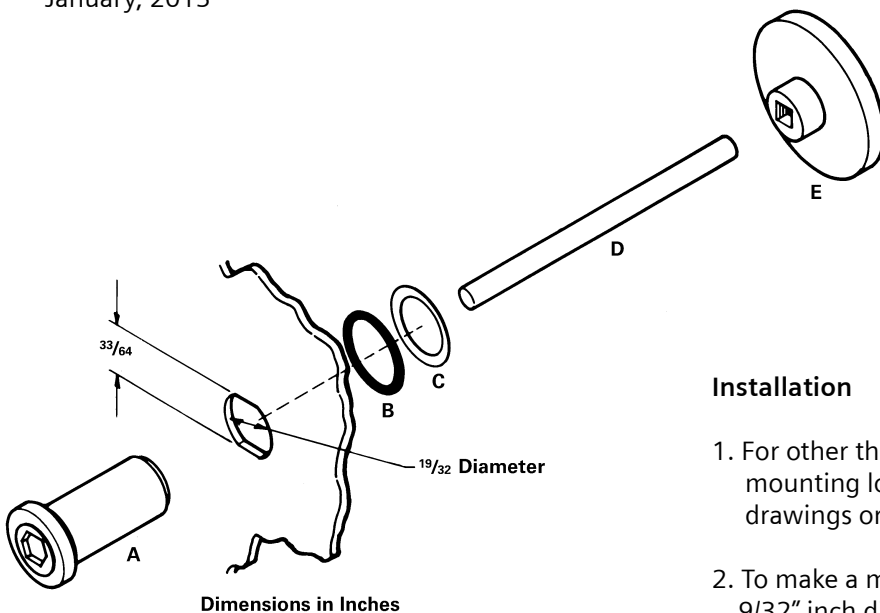


## Instructions

July, 2015  
Supersedes Issue of  
January, 2013

E87010-A0035-T003-A4-49MA  
Universal Overload Reset Operator  
For NEMA 1, 3, & 12 Enclosures  
Cat.No. 49MARB



## Installation

1. For other than replacement purposes, determine the mounting location of the operator. Refer to appropriate drawings or the enclosure.
2. To make a mounting hole for the operator, cut a  $9/32$ " inch diameter hole. If horizontal alignment of the word RESET on sleeve (A) is desired, cut the mounting hole to the dimensions shown in the illustration.
3. From outside the enclosure cover, insert sleeve assembly (A) through the mounting hole and place door face down on a hard surface.
4. Press-fit Retaining Clip (C) onto Reset Sleeve (A) using a  $9/16$ " deep socket. You may need to lightly tap the socket with a hammer to seat the Retaining Clip (C). **DO NOT USE EXCESSIVE FORCE OR THE SLEEVE (A) MIGHT CRACK.**
5. Cut appropriate length of nylon rod (D). Press one end of the nylon rod (D) into pusher (E). From inside the enclosure cover, press the other end of nylon rod (D) into sleeve assembly (A).
6. To check that the reset assembly is the proper length, close the enclosure door. Make sure the quarter-turns, latches and other fasteners are fully engaged so that the door is tightly closed.  
Slowly press the enclosure reset button. If resistance is felt with no movement of the reset button, the reset rod may be too long and will need to be shortened.  
Once the pusher touches the reset button on the overload relay, continue pressing the enclosure button until the reset button on the overload relay is fully pressed. If it does not fully press, the rod may be too short and a longer rod will need to be used.

## Description

The universal overload reset operator is a mechanical operator for installation on an enclosure cover to actuate the overload resetter inside the enclosure. A screwdriver or similar tool is used to actuate the cover mounted operator. Completely depressing the operator results in  $5/8$  inch push travel. The diameter of the pusher pad is  $1\ 3/8$  inches.

Use with NEMA type 1, 3, and 12 Enclosures.

## Contents of kit:

The universal overload reset operator kit, catalog number contains the following

- 1 A Sleeve assembly
- 1 B O-Ring
- 1 C Retaining clip
- 1 D Nylon rod
- 1 E Pusher