

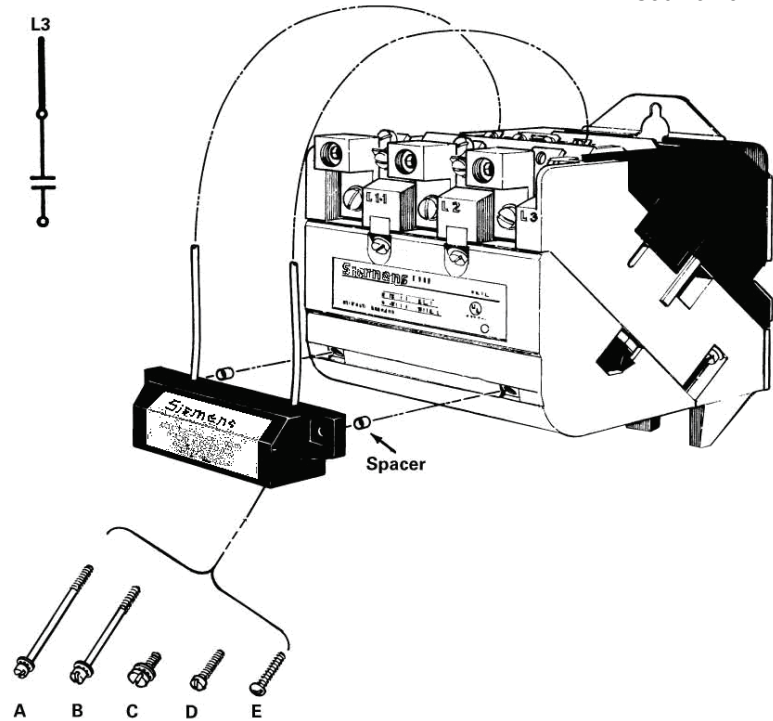
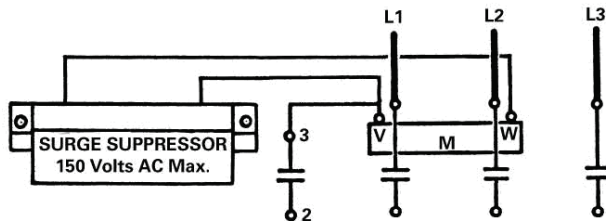
Instructions

July, 2007
Supersedes Issue of
September, 2006

49-HD26344

Surge Suppressor For AC Magnetic Control
Sizes Up to NEMA 4
Class 14 & 40

Cat.No.49D26344



Description

The surge suppressor helps protect sensitive electronic and electrical equipment and minimizes electrical interference with television and communications equipment by limiting the transient voltage produced by the coil to approximately 200% of the peak line voltage.

Use with any controls (not limited to Innova) up through NEMA size 4.

Rating: 150 VAC maximum.

Contents of kit, catalog No.49D26344:

1 surge suppressor

2 spacers

5 sets of size 6-32/8-32 screws with lock washers or self-tapping screws, as follows:

2 **A** screws to replace arc box cover screws for Model P units, NEMA sizes 2 and 2 ½

2 **B** screws to replace arc box covers screws for Model P units, NEMA sizes 00 through 1 ¾

2 **C** screws #8 for panel mounting (this method is required for NEMA Size 4)

2 **D** screws for mounting on Model P arc box covers with threaded inserts, NEMA sizes 3 and 3 ½.

2 **E** self-tapping screws for mounting on Model F arc box covers with predrilled holes, NEMA sizes 00 through 3 ½ .

Installation

Note: Be sure enclosure has adequate depth for the suppressor.

Mounting on Innova series controls. For Model P units, NEMA sizes 00 through 2 ½, remove and discard existing arc box cover screws. For all units, secure the surge suppressor to the arc box cover with the spacers and applicable screws.

Panel mounting: Mount the surge suppressor flat on the panel in any position with screws C.

Wiring: Connect the surge suppressor leads to the magnet coil terminals. Most Innova coil terminals are marked V and W as shown in the wiring diagram.

(For Engineering Reference Only - Rev.D)