



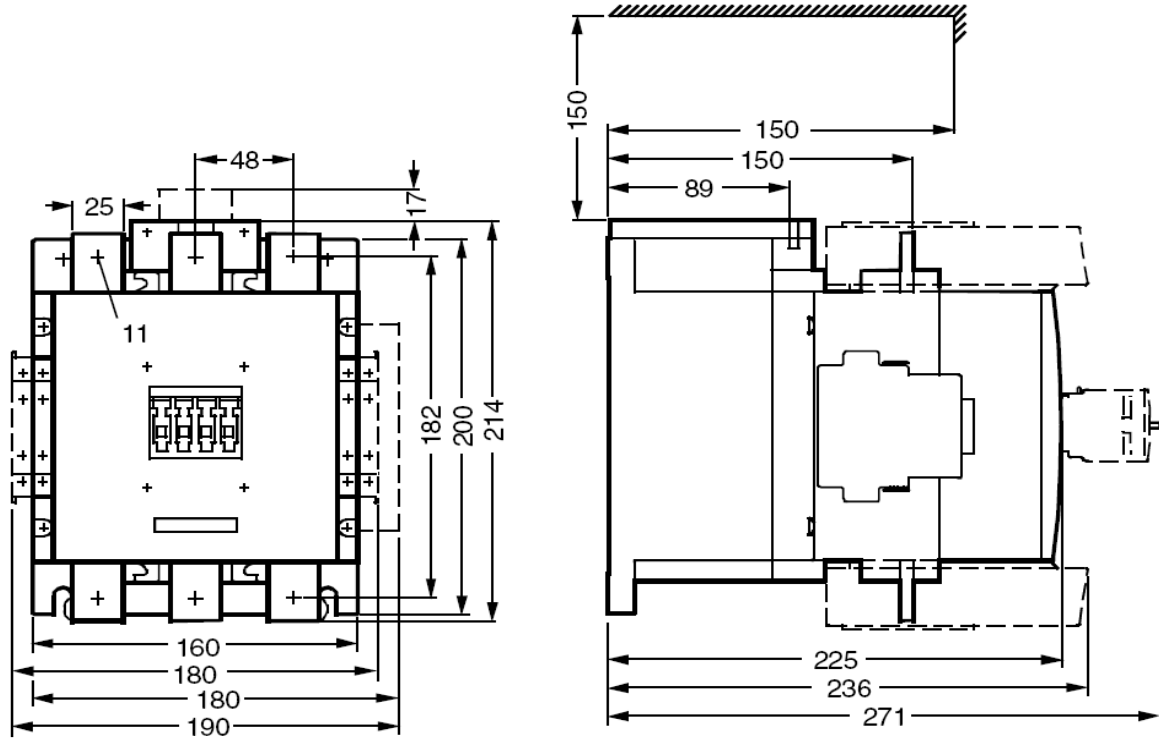
Lighting Contactor
Class LE
Electrically Held
400 Amp, 3 Pole

August, 2012

General technical data:	
Finger-safe (main circuit / control circuit)	no / yes
Degree of pollution	3
Altitude (m)	2,000
Ambient storage temperature (°C)	-55 to 80
Ambient operating temperature (°C)	0 to 40
Humidity (% non-condensing)	10 to 95
Shock resistance at rectangular impulse (g/ms)	8.5 / 5, 4.2 / 10
Shock resistance at sine pulse (g/ms)	13.4 / 5, 6.5 / 10
Rated impulse voltage resistance (kV)	no data
Rated insulation voltage (V)	no data
Mechanical operating cycles as operating time:	
of contactor	10,000,000
of contactor with additional aux contacts	10,000,000
Main circuit:	
Number of NC / NO main contacts	0NC / 3NO
Typical power loss per conductor (W)	35
Off-load operating frequency (cycles per hour)	2,000
Current ratings:	
Tungsten (poles per phase)	400A @277V 1p 1ph
	400A @480V 2p 1ph
	400A @480V 3p 3ph
Ballast (poles per phase)	400A @600V 1p 1ph
	400A @600V 2p 1ph
	400A @600V 3p 3ph
General & resistive (poles per phase)	400A @600V 1p 1ph
	400A @600V 2p 1ph
	400A @600V 3p 3ph
Coil ratings:	
Inrush / sealed power (VA)	830 / 9.2
Coil voltage tolerance factor	0.8 - 1.1
Coil code 024	23-26V AC 40-60HZ, DC
Coil code 120	110-127V AC 40-60HZ, DC
Coil code 208	200-220V AC 40-60HZ, DC
Coil code 240	220-240V AC 40-60HZ, DC
Coil code 277	240-277V AC 40-60HZ, DC
Coil code 347	NA
Coil code 480	440-480V AC 40-60HZ, DC
Coil code 600	575-600V AC 40-60HZ, DC
Internal/standard auxiliary contact:	
Number of NC / NO auxiliary contacts	2 NC / 2 NO
Rating	A300 / Q300

Installation/mounting/dimensions:	
Mounting orientation	vertical
Type of mounting: screw / DIN rail	yes / no
Height x Width x Depth (mm)	214 x 160 x 225
Minimum clearance to sides (mm)	10
Minimum clearance to earthed parts (mm)	10
Connection type / torque for main circuit terminals	screw / 180-195 lb in
Connection type / torque for control circuit terminals	screw / 7-10 lb in
Solid & stranded conductors for main contacts (AWG)	2x(2/0-500MCM)
Solid & stranded conductors for control circuit (AWG)	2x(18-14)
Conductor type for main and control circuits	75°C CU
Short circuit current rating of main circuit:	
Short circuit current rating	18kA @ 600V
Max fuse / circuit breaker (Amp)	800 / 500
Certificates:	
cULus	

Dimensions



Wiring Diagram

