

SINUMERIK Injection Molding electric

The automation solution for high-end fully electric Injection Molding machines

Are you looking for a high-end solution for your fully electric injection molding machine?

Then you should take a look at our solution for fully electric injection molding machines.

The SINUMERIK is a perfect automation system for high-end, fully electric injection molding machines which are needing high-dynamic and repeatable processes. Optimized CNC functionality with the possibility to do easy and quick modifications. This stands for best product quality regarding the equipment of your fully electric injection molding machine.

The application solution encompasses all major features for your high-end fully electric injection molding machine. Automating your fully electric injection molding machine is now even easier and more cost-effective.

With this solution, you can now rely on fully functional, pretested technology.

Your benefits

- Maximum flexibility due to scalable products, systems and solutions
- Simple, user-friendly operation of the entire machine
- Fast, easy mold changing
- Scaled performance of drive and operator components ensures optimum suitability to requirements
- Built with standard components: SINUMERIK, SINAMICS, SIMATIC HMI and distributed peripherals
- Open, application-based solution: can be individually adapted by the OEM

Putting you in the picture

Our application solution offers you standard user pages which you can

- change
- adapt to your requirements and
- edit so that they are truly customized

All this in the blink of an eye with our state-of-the-art WinCC flexible visualization software.

The basis of the system is our Touch Multi Panel at 12", 15" or 19".

Plastics

www.siemens.com/plastics

SIEMENS

Highlights

You can offer your customers a broad range of possible hardware with just one single, basic standard application. Operators, service engineers and technicians have a range of screens at their disposal for very convenient work. User-friendly touch operation enables the easy entry and selection of all parameters for your fully electric injection molding machine. The WinCC flexible software development environment mentioned above stands for maximum flexibility.

Open to all possibilities

During parameterization, you can freely select languages and units. With centimeters or inches, bar or psi, your machines are easier to export. The English and German languages are integrated in the standard application, and you can, of course, switch from one to the other online.

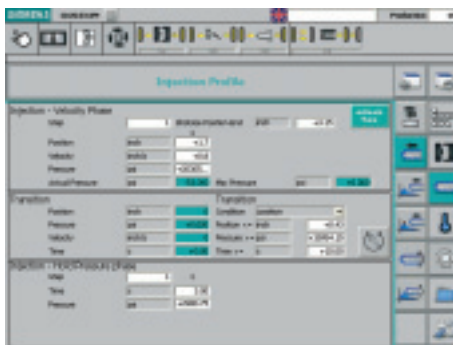
User-friendly engineering

Engineering costs are significantly reduced when using Step7 and SINUMERIK Operate. A comprehensive range of program functions is saved in a software library – therefore facilitating fast and user-friendly engineering.

Tried and tested hardware

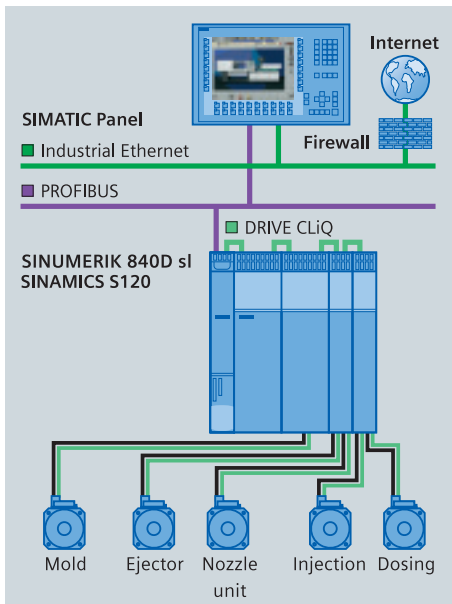
With the standard SINUMERIK hardware, you have everything under control:

- SINUMERIK controls your fully electric injection molding machine, high-performing and modular
- All components are globally available and CE- and UL-tested



Highlights of SINUMERIK Injection Molding electric

- HMI language English/German
- Core pullers
- Automatic toggle lever
- mounting height adjustment
- Air valve controllers
- HMI touch operator panel
- Nine password levels
- Profiles:
 - Closing profile 10x
 - Opening profile 10x
 - Ejector 10x
 - Injection 10x
 - Holding pressure 10x
 - Feeding 10x
- Decompression before/after
- Temperature control TCP 3000
 - Autotuning
 - Control of eight zones that can be expanded as required
- Purges
- Ethernet connection
- Unit switchover
- Euromap 12 interfaces (custom-specific)
- Recipes are exported
- Recipes
- Lubrication program
- Diagnostic pages with operating messages, fault messages and trace functionality



Hardware

Control: SINUMERIK 840D sl

Converters: SINAMICS S120

Operator devices: SIMATIC MP 377 19" Touch , ...

Motors: 1FK7, 1FT7, 1PH8, ...

Siemens AG
Industry Sector
Motion Control Systems
P.O. Box 3180
91050 ERLANGEN
GERMANY

Subject to change without prior notice
Order No.: E20001-A1200-P620-X-7600
Dispo 06372
SCHÖ/28582 GD.MC.20.KUST.52.0.02 SB 09101.0
Printed in Germany
© Siemens AG 2010

www.siemens.com/plastics

The information provided in this brochure contains merely general descriptions or characteristics of performance which in case of actual use do not always apply as described or which may change as a result of further development of the products. An obligation to provide the respective characteristics shall only exist if expressly agreed in the terms of contract. All product designations may be trademarks or product names of Siemens AG or supplier companies whose use by third parties for their own purposes could violate the rights of the owners.