

Features & Benefits

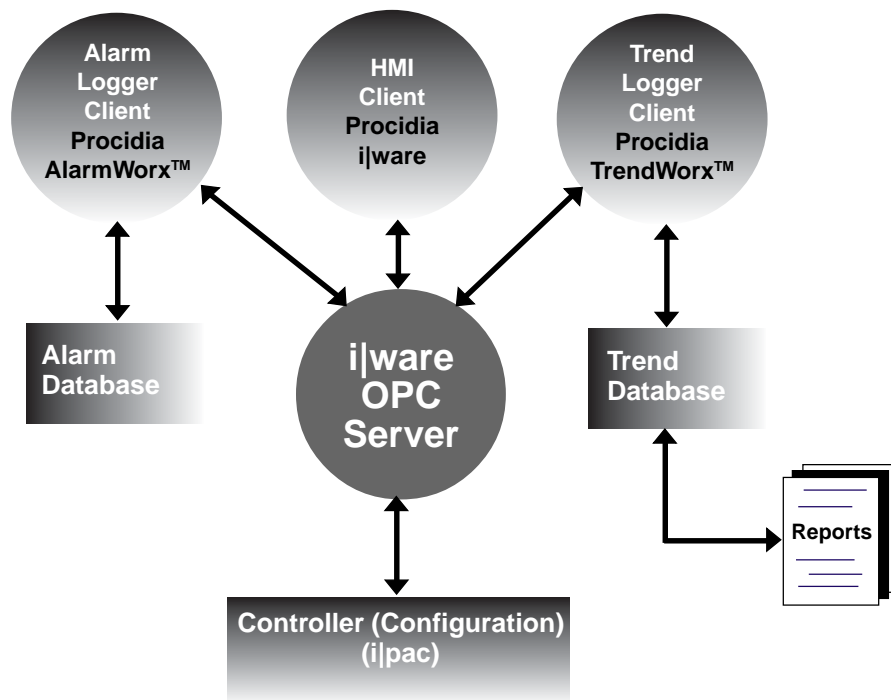
- ▶ Universal location for all process information so you only have to enter information once, which significantly minimizes manual errors
- ▶ The OPC data server automatically reads the network, identifies attached controllers, and generates a global system database within a few minutes
- ▶ ijware OPC data server can be used with any OPC client to facilitate plantwide communications
- ▶ Ability to test communication with the controller prior to generating an HMI interface
- ▶ Support of other protocols, such as Moore's Local Instrument Link (LIL), Modbus, and Ethernet, to integrate with your other control systems and field devices
- ▶ Monitoring mode that allows on-line value viewing and checking

Description

ijware server is an OPC-compliant data server that generates a system-wide global database with the click of a mouse. ijware OPC server acts as the universal location for all of your process information, including tags, alarms and history. So, you only ever have to enter information once, which significantly minimizes the possibility of manual errors and cuts your configuration time in half.

The OPC data server automatically reads the network to see what controllers are attached and generates a global system database. This database maintains itself and updates live process variables, plus changes to the controllers, such as tag and range values. Your system database and HMI—complete with status screens, group displays, and control and sequencer faceplates—are automatically created from your control strategy data.

Because it is an OPC-compliant server, the ijware OPC server integrates with the HMI and any other OPC-compliant clients to facilitate plant-wide communication. It also provides a standard mechanism to transfer data from one to the other. Besides decreasing your costs and increasing your bottom-line, this approach allows you to move to start-up more quickly.



Controllers

ijware for 353 Series Controller

Introduction

Features & Benefits

- ▶ Five levels of screens are automatically created, based on controller strategy, eliminating days of HMI development time
- ▶ 50 ms dynamic animation updates provide operators with up-to-the-minute information
- ▶ Powerful display creation and animation tools, coupled with an advanced symbol library, expedite operator interface customization
- ▶ Built-in expressions and calculations, as well as display, trending, and alarm management functions, deliver comprehensive operator information
- ▶ Scalable and fixed scale displays that allow information to be displayed in the form and manner required for a particular application
- ▶ Embedding of ActiveX® controls and OLE objects to display information from other systems and devices
- ▶ Ability to log, time-stamp, and store controller alarms and events on a PC hard drive for later review and analysis

Description

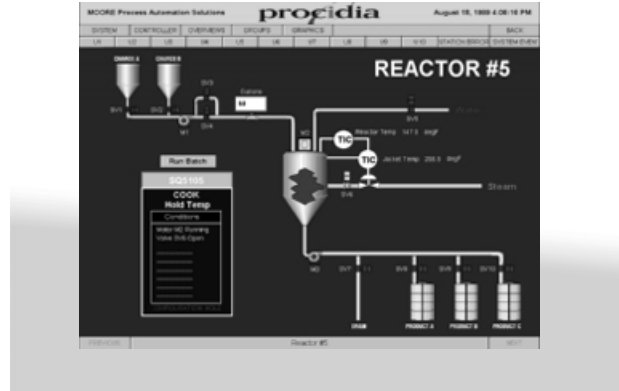
ijware is a comprehensive operator interface—including status screens, group displays, control faceplates, and loop detail and tuning screens—that is automatically created from the controller database. That makes your job easier and significantly reduces costs by completely eliminating your initial HMI development effort. But, you can still add graphics and modify the screens that ijware makes for you to customize the overall look and feel.

ijware enhances the interface between client and server applications using a standard mechanism to transfer data from one to the other. The standard, OPC, facilitates plant-wide communication, because it integrates ijware with any other OPC-compliant software or system. ijware also includes Ethernet communications that eliminate the need for integration with fieldbus technology and dramatically reduce networking costs.

Enterprise Edition

The Enterprise Edition provides alarm monitoring and historical trending. The alarm and trend servers support a comprehensive list of features. ArchiveX viewers permit quick and easy customization of viewer display format. Alarm logging and trend reports are also available.

ijware supports VBA scripting for custom applications. Login security is available.



Specifications

Recommended Requirements

- ▶ ijstation operator workstation
 - Or -
- ▶ Plant Workstation
 - Pentium 2.0 GHz or higher processor
 - 1 GB RAM
 - 40 MB of available hard disk space for applications
 - 1 GB hard disk space for historical database
 - CD ROM drive
 - SVGA 800x600 resolution monitor (256 colors) or better
 - Microsoft Windows 95/98 or Windows NT 4.0 service release 6.0, XP Professional
 - Microsoft DCOM
 - Microsoft Internet Explorer version 3.02 or higher
 - Trend WorX32

Controllers

i|ware for 353 Series Controller

Ordering data

Model Number

Order No.

i|ware

iware PC Operator Interface Software Ver. 3.00

- BasicV3.00_500pt
- EnterpriseV3.00_500pt
- EnterpriseV3.00_1500pt
- EnterpriseV3.00_unlimited
- EnterpriseV3.00_TimeDemo_1yr_500pt
- OPCServers_Modbus_EN_LIL

iWare PC Operator Interface Software Ver. 3.00 Upgrades

- BasicV3.00_500pt_Basic_500pt
- EnterpriseV3.00_500pt_Basic_500pt
- EnterpriseV3.00_1500pt_Basic_500pt
- EnterpriseV3.00_unlim_Basic_500pt
- EnterpriseV3.00_500pt_Enterprise_500pt
- EnterpriseV3.00_1500pt_Enterprise_500pt
- EnterpriseV3.00_unlim_Enterprise_500pt
- EnterpriseV3.00_1500pt_Enterprise_1500pt
- EnterpriseV3.00_unlim_Enterprise_1500pt
- EnterpriseV3.00_unlim_Enterprise_unlim

TGX:
■ ■ ■ ■ ■ ■ ■ ■ ■ ■ ■ ■ ■ ■ ■ ■
↑ ↑ ↑ ↑ ↑ ↑ ↑ ↑ ↑ ↑ ↑ ↑ ↑ ↑
I W A R E B 0 5 V 3 0 0
I W A R E E 0 5 V 3 0 0
I W A R E E 1 5 V 3 0 0
I W A R E E U L V 3 0 0
I W A R E E T D V 3 0 0
I W A R E O P C V 3 0 0
I W U B 0 5 V 3 0 0 B 0 5
I W U E 0 5 V 3 0 0 B 0 5
I W U E 1 5 V 3 0 0 B 0 5
I W U E U L V 3 0 0 B 0 5
I W U E 0 5 V 3 0 0 E 0 5
I W U E 1 5 V 3 0 0 E 0 5
I W U E U L V 3 0 0 E 0 5
I W U E 1 5 V 3 0 0 E 1 5
I W U E U L V 3 0 0 E 1 5
I W U E U L V 3 0 0 E U L